



CEDIA 2009

product reference

featuring...

PROCISE™

prodigy™

ADMS™
INTERMEDIA DELIVERY

CRESTRON
DigitalMedia™

infiNET EXD

V-Panel



The Crestron booth at CEDIA 2009 is nearly double the size of our booth from last year. We need the larger booth to show off all the new break-through products we're introducing. **And our Soundroom-1 (SR-1) space is 50% bigger this year to accommodate all our latest HD digital home theater technology.**

While most companies are cutting back, we're picking up the pace. This year we've already launched 168 new products, and we'll introduce dozens more before the end of the year. These are some of the most exciting products and technologies ever launched, leading the industry into the digital age.

Crestron DigitalMedia™ (DM) technology has delivered beyond the expectations of both integrators and end users. DigitalMedia is the most successful new product introduction in company history for one simple reason: it's the only solution that really works. DM solves the challenges of the digital age, distributing all analog and uncompressed HD digital signals long distance and managing embedded data such as HDCP, EDID and CEC. Dealers say it's easier than PVID to install, and clients say it's a life saver. Dispel the myths and learn first-hand what it's really all about.

There are several new products you simply must see. New Apple® integration solutions include the latest CEN-IDOCV **Interface for iPod®**, **Crestron Mobile Pro™** control app for iPhone® and Mac Desktop application. For audiophiles and movie enthusiasts, the revolutionary **ADMS InterMedia Delivery System** and the new **PROCISE™ HD Surround Sound Processor** (PSPHD) take home entertainment to places never before seen or heard. The ADMS brings the entire universe of digital entertainment together into one revolutionary platform, while the PSPHD produces the highest quality 7.3 digital surround sound, delivering true HD audio that simply must be heard to be believed.

We'll also introduce the highly anticipated **Prodigy, our new simple and affordable line of home control**. Prodigy brings Crestron innovation and quality to more homes than ever before. There's no time-consuming system design or expensive installation. Setup is easy using Prodigy Composer software. Prodigy is a complete solution, including home theater, distributed audio, and wireless lighting and climate control.

And of course, there are several new Crestron touchpanels. The **TPMC-4SM Wall Mount Touchpanel** is a low-cost, PoE (Power over Ethernet) interface in an incredibly thin profile design. The TPMC-4SM installs in a low-voltage ring or standard 1-gang box using just a single Ethernet cable. With a variety of mounting options, including glass flush mount, tilt mount and tabletop, the 4SM can be installed in places where no other touchpanels can.

The **TPMC-3X Handheld WiFi Touchpanel** features a sleek, lightweight form factor with an ultra-bright, high-contrast display. We're changing the way you view WiFi. TPMC-3X provides exceptional omni-directional communication enabling roaming between gateways for extended multi-room control. A uniquely designed "sleep mode" conserves battery life and enables the TPMC-3X to instantly respond, without any delay or connect time.

V-Panel Touchpanel Displays are the next generation of Crestron touchpanels, and the perfect complement to the DigitalMedia family. Together with a DGE-2 Digital Graphics Engine, V-Panels feature dual-window 1080p HD video display, streaming multimedia, VoIP communications, and Web browsing. The same ultra-thin panels fit flush in a wall, on VESA mounts or on a tabletop.

As the leaders in HD digital technology and home control, we have made an unprecedented investment in your future. All this innovation and product development is for you to create new opportunities and grow your business in the new digital era. See why the most successful installers rely on Crestron, and why more homes worldwide are Crestron homes.

Contents

Featured Products:

- ▶ PROCISE™
- ▶ Prodigy™
- ▶ ADMS
- ▶ DigitalMedia™
- ▶ HDMI™ Solutions
- ▶ V-Panel
- ▶ TPMC-3X
- ▶ TPMC-4SM
- ▶ Crestron Control™ and Crestron Mobile Pro™
- ▶ Crestron Interface for iPod®

-
- | | |
|------------------------------------|--|
| ▶ Prodigy™ | ▶ Multiroom Distribution |
| ▶ V-Panel Touchpanels | ▶ Wideband Switchers |
| ▶ Isys™ Wireless Touchpanels | ▶ Crestron® Certified Interface Cables |
| ▶ Isys i/O® WiFi Touchpanels | ▶ Control Systems |
| ▶ Isys™ Wall Mount Touchpanels | ▶ Power Conditioner |
| ▶ Isys™ Tilt Touchpanels | ▶ Keypads |
| ▶ Network Video Streamer | ▶ infiNET EX™ Lighting |
| ▶ Handhelds | ▶ DIN Rail Lighting |
| ▶ Home Theater | ▶ iLux™ Integrated Lighting System |
| ▶ ADMS Intermedia Delivery System™ | ▶ Sensors |
| ▶ Apple® Integration Solutions | |
| ▶ DigitalMedia™ | |
| ▶ HDMI™ Solutions | |

Featured NEW Products

High-Definition Surround Sound Processor

There is certainly no shortage of high-quality, high-performance home theater processors on the market today. But only PROCISE delivers all the features you need to address the myriad design challenges of the high-end custom market.

Without a doubt, the PSPHD PROCISE™ High-Definition Surround Sound Processor from Crestron® delivers truly awe-inspiring performance and a handsome appearance befitting the most high-end home theater or listening room. One look and you'll be captivated by its marriage of modern design with...what's that? Vintage style VU meters?! That's right, the dual front panel VFDs display "mechanical" VU meters and spectrum analyzers, providing real-time signal monitoring along with a ton of other data to keep you informed throughout setup and operation.

"PROCISE is designed to please the most discerning audiophile or movie fan."



PSPHD Rear Angle

PROCISE™

PROCISE is designed to please the most discerning audiophile or movie fan, with exclusive features that will especially inspire the audio design professionals amongst us. Features like Audyssey MultEQ® XT, Dynamic EQ, and Dynamic Volume enable calibrating a complete 7.3 speaker system to perfection. Its three independent subwoofer outputs include extensive bass management to achieve shockingly realistic low frequency effects at every seat. With XLR balanced outputs and inputs, and numerous digital inputs including HDMI™ and professional AES/EBU, PROCISE is capable of ultra low-noise performance up to 125 SNR.

Its six HDMI™ 1.3a inputs support high bit rate audio formats like Dolby® TrueHD 7.1 and DTS-HD Master Audio™ 7.1. HDMI in and out also affords high-performance switching of HD video signals to drive a 1080p HDTV display or projector, or to interface with a Crestron DigitalMedia™ system. Advanced HDCP support ensures compatibility with DRM protected content and equipment.

Not just for residential applications, PROCISE includes many extra features to meet the demands of a commercial boardroom or auditorium (and many elaborate home installs). For instance, its three balanced "mix" inputs, featuring independent EQ, notch filtering, gating, and compression, allow interfacing directly with mic mixers, teleconferencing codecs, and paging systems. Separate stereo and mono down-mix outputs enable full integration into larger multi-room distribution and AV presentation systems. Versatile signal steering throughout affords extensive customization for any application without the need for additional outboard signal routing equipment.

Of course, native Crestron system integration via Cresnet® and Ethernet affords unmatched control capability using any Crestron touchpanel, handheld remote, or e-Control®. Full setup and configuration is facilitated through the front panel or using PROCISE Tools software.



PROCISE™ High-Definition Surround Sound Amplifier

The PROAMP-7X400 7-channel amplifier complements the PSPHD perfectly, delivering a heart-pounding 400 Watts per channel, with XLR balanced inputs, Cresnet and Ethernet connectivity, and seamless control and monitoring through the PSPHD front panel.

See page 24 for additional details.

Prodigy by Crestron, the most respected and trusted name in home automation, is control without compromise. Installed in more homes worldwide than all other brands combined, Crestron is the global standard in luxury homes.

Simple to Install

Prodigy products are all specially designed to seamlessly work together so there's no special wiring or expensive installation. Fast, reliable wireless solutions mean that any home system can be set up quickly and easily.

Easy to Use

Prodigy intelligently manages home entertainment, lights and thermostats for you, so you just instinctively press a button and Prodigy serves up whatever you desire.

Affordable

Prodigy provides the highest level of home entertainment, comfort and convenience for every family, every lifestyle and every budget.



prodigy™
simple + affordable



1. SELECT ROOMS

2. CHOOSE SOURCES

3. ENJOY!

Prodigy Composer Setup Wizard

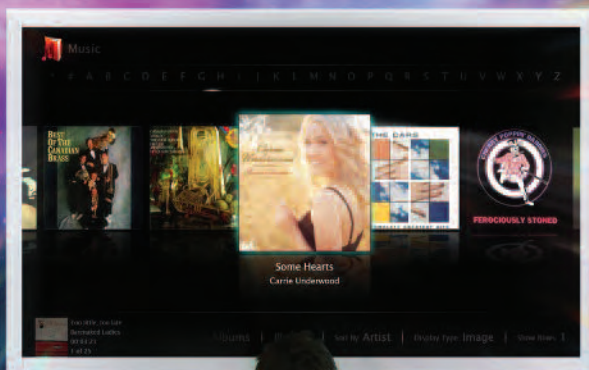
Prodigy is easy to set up. There's no system design, wiring or expensive installation. The software guides you through a few simple steps using basic drop down menus and check boxes.

Now you're ready! **It's as easy as 1-2-3.**

Featured **NEW** Products

ADMS™

INTERMEDIA DELIVERY



NO BOUNDARIES

Revolutionizing the way we experience media, ADMS removes the boundaries between TV, movies, music and Internet. ADMS doesn't just serve the content you have, it delivers anything you want.

www.crestron.com/noboundaries



ADMS Intermedia Delivery System™

The ADMS Intermedia Delivery System from Crestron® revolutionizes the way you experience digital media by removing the boundaries between movies, music, TV, and the Internet. The ADMS doesn't just serve the content you own, it delivers anything you desire.

Part of a complete Crestron home entertainment system, the ADMS provides a powerful way to gather every type of content from a full array of sources, whether from a DVD or Blu-ray Disc™, local hard drive, network device, or online. Exclusive WorldSearch™ finds anything you want, instantly presenting every available movie title, streaming video, Internet TV program, and music file that matches your search — all within a beautiful graphic interface, onscreen or on a Crestron touchpanel, for immediate enjoyment through your home theater or whole-house audio system.

Not just another media server.

Crestron Intermedia Delivery™ brings together all the most popular content sources so you don't have to search your computer hard drive or DVD changer, or comb through countless Websites looking for that new blockbuster release, viral video, or online TV episode. The ADMS provides a cohesive and intuitive user interface for everything, displaying cover art and metadata for music and movies, with multiple ways to find the content you want — quickly and easily — delivering it on demand right to your HD display in full 1080p resolution and 7.1 surround sound.

ADMS lets you purchase and rent movies right through your HDTV display or touchpanel. Or, visit your favorite Websites using the integrated Web browser. Use the built-in Blu-ray Disc drive to play DVDs and import CDs. Transfer home movies, photos, and music files through the front panel USB, 1394, and MMC ports. Even access home automation controls right on screen.

With its user-friendly onscreen interface, native Crestron control integration, ultra secure and reliable operating system, RAID 1 data loss prevention, quiet operation, and remote dealer support access, the ADMS is clearly a superior alternative to traditional media servers and HTPCs.

Exclusive WorldSearch™ technology performs lightning fast intermedia searches, instantly displaying the results in a graphical onscreen menu.



Mass Movie Storage
ADC-200BR

In addition to your online downloads, adding the ADC-200BR 200-Disc Blu-ray Changer to the ADMS seamlessly integrates an entire collection of DVDs and high-definition Blu-ray Discs into the media library. Up to five changers can be daisy-chained, providing ready access to an incredible 1000 discs. Because the discs are not “ripped” to the hard drive, copyrighted content can be stored and played legally for your personal enjoyment.



Easy Hard Drive Expansion
CEN-NAS-4TB

Expanding storage beyond the system's internal 1TB hard drive is made easy with the CEN-NAS-4TB. It comes pre-configured for the ADMS, and features four hot-swappable 1TB hard drives with RAID 5 protection, all in a single rack space. It can store 1500 standard definition movie downloads, and well over 300,000 songs (compressed @ 320kbps).



Wireless Keyboard
KB-RFUSB

Navigate the ADMS and surf the Web with ease from any seat in the room with the KB-RFUSB Wireless Keyboard. It features a 360 degree mouse pad, plus extra keys for quick-access to the many ADMS features.

See page 26 for additional details.



DigitalMedia™

Computer
Ethernet
Analog Video
HDMI
DisplayPort
USB HID



The digital age is here. Are you ready? With DigitalMedia™ from Crestron, you are!

Only HDMI™ supports the latest high-definition video and surround sound audio formats. You know you need to integrate it into your whole-house system designs, but do you know how? Perhaps you've made the jump, adding an HDMI switcher, maybe some CAT5 HDMI signal extenders? Did it all fit together neatly and work without a glitch — or do you feel like there's got to be a better solution?

Crestron has developed DigitalMedia to address the complexities of HDMI and other digital signals, managing high-definition digital video and audio with HDCP right alongside existing analog formats, providing a truly comprehensive solution that's amazingly simple to implement. Whether designing a new multiroom distribution system from the ground-up, or extending the life of an existing analog system, DigitalMedia gives you all the tools you need to get it done quickly and easily.



DM CAT or DM Fiber™

For long cable runs feeding a house full of video displays and projectors, DigitalMedia (DM) gives you the choice of using CAT-type twisted-pair copper wire or multimode optical fiber for distributing all your signals. Cable lengths up to 450 ft using DigitalMedia™ Cable (DM-CBL), or 1000 ft using CresFiber™, are possible. All signals are distributed in their native formats and resolutions without compression or scaling, so there's never any loss of picture or sound quality.

DM Switchers

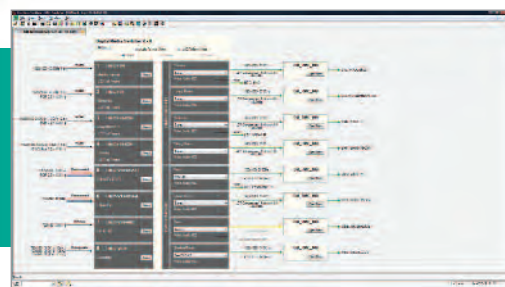
The DM-MD8X8 and DM-MD16X16 from Crestron represent the most sophisticated matrix switchers available, delivering an incredible amount of functionality and versatility in just a few rack spaces. To handle a rack full of HDTV receivers, disc players, game consoles, media servers, computers and other sources, every input is modular, with a wide selection of input cards and cables offered to address virtually any digital or analog AV input type. The outputs are also modular offering combinations of DM CAT, DM Fiber, HDMI, and analog audio.

The DM-MD6X1 is ideal as the main switcher for a single room. Its combination of digital, analog, and DM inputs and outputs makes it perfect for adding digital signal routing capability to an existing analog system.



DM Tools

Every DM product boasts capabilities far beyond mere AV signal routing, providing invaluable features like HDCP key management, EDID format and resolution management, CEC device control, low-latency QuickSwitch HD™ switching, USB HID mouse/keyboard routing, Ethernet networking, analog audio distribution, and extensive troubleshooting tools. You'd think all this technology would be difficult to use, but it's not. In fact, the very tools that make DM work so well also make it extremely easy to install and configure, allowing a complete 16x16 system to be commissioned in as little as 15 minutes.

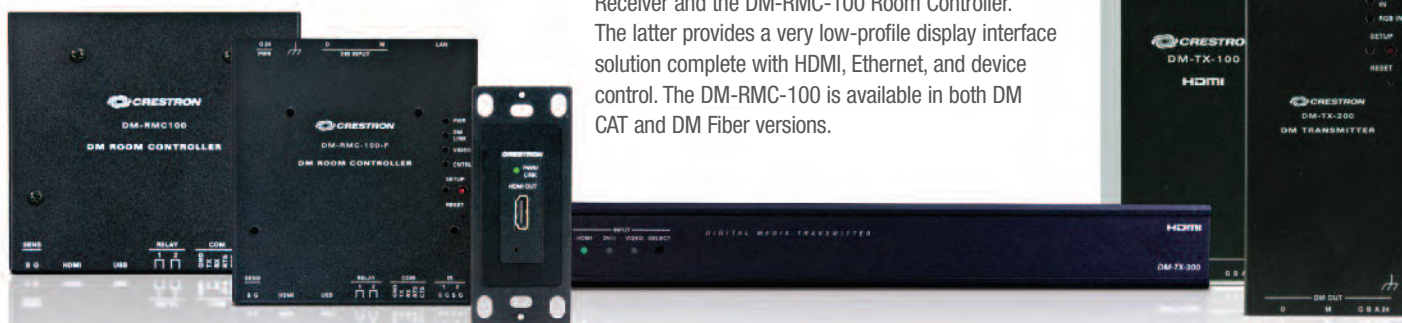


DM Transmitters and Receivers

Systems as simple as a Blu-ray Disc® player or computer feeding a single HD display can be accomplished using just a DM transmitter and receiver. A larger system may use numerous transmitters and receivers to provide connectivity for all kinds of devices anywhere in the home.

DM-TX Series transmitters include a selection of wall plate, surface mount, portable, and rack-mountable options, with a variety of digital and analog input types, perfect for adding input connectivity for a laptop in the home office, a game console in the family room, or bridging signals between the theater and the central equipment closet.

DM receivers include the DM-RX1-1G Wall Plate Receiver and the DM-RMC-100 Room Controller. The latter provides a very low-profile display interface solution complete with HDMI, Ethernet, and device control. The DM-RMC-100 is available in both DM CAT and DM Fiber versions.



DM transmitters and receivers can work together in a wide variety of applications, with or without a DM switcher or control system. They work right out of the box, affording a remarkable amount of functionality, with easy setup through Crestron DM Tools software.

See page 28 for additional details.

HDMI™ Solutions

HDMI is the new standard for interfacing high-definition AV equipment, and it is key to handling the latest HD video and audio formats. As the leader in HDMI and control system technologies, Crestron has designed its QuickSwitch HD™ switchers and HDMI over Fiber Transmitters and Receivers to provide unparalleled performance, functionality, and custom integration capability.

Crestron exclusive QuickSwitch HD technology minimizes the annoying switching latency that plagues other HDMI switchers. Just like our DigitalMedia™ products, QuickSwitch HD switchers provide capabilities for managing the EDID format and resolution, HDCP keys, and CEC control signals for every connected device through Crestron DM Tools software, and through Cresnet® or Ethernet integration with a control system.

New HDMI over Fiber Transmitters and Receivers deliver a straightforward, high-performance solution for extending HDMI, IR, RS-232, USB HID, Ethernet, and analog audio signals simultaneously up to 1000 feet over a single multimode fiber cable. A choice of standard, armored, or super-thin transparent fiber optic cables is offered, preterminated in lengths up to 300 feet.

HD-MD8X1 & HD-MD8X2 QuickSwitch HD™ HDMI Switchers

- ▶ High-performance 8x1 and 8x2 HDMI switchers
- ▶ Low latency QuickSwitch HD™ switching technology
- ▶ Supports HDMI 1.3a with Deep Color
- ▶ Supports 7.1 channel HD lossless audio
- ▶ DVI and DisplayPort multimode compatible
- ▶ Resolutions up to 1920x1200 and 1080p60
- ▶ Detects and displays detailed signal information
- ▶ Manages HDCP for connected devices
- ▶ Manages AV signal formats automatically
- ▶ Enables device control via CEC
- ▶ Allows audio breakaway switching
- ▶ Front panel switching controls
- ▶ Native control system integration via Ethernet or Cresnet
- ▶ Single space 19" rack-mountable



HD-MD8X1 QuickSwitch HD™ HDMI Switchers



HD-MD8X2 QuickSwitch HD™ HDMI Switchers



Only Crestron delivers a truly complete high-definition multimedia signal management solution.

HD-TX1-F & HD-RX1-F HDMI™ over Fiber Transmitter and Receiver

- ▶ Extends uncompressed digital video, audio, and control signals 1000 feet over a single multimode fiber
- ▶ Supports HDMI 1.3a with Deep Color
- ▶ Supports 7.1 channel HD lossless audio
- ▶ Handles resolutions up to 1920x1200 and 1080p60
- ▶ Passes EDID, CEC, and HDCP
- ▶ Universal IR repeater up to 192kHz
- ▶ Bidirectional RS-232 extender up to 115k Baud
- ▶ No programming or configuration needed
- ▶ 12VDC power packs included

HD-TX3-F & HD-RX3-F HDMI™ over Fiber Transmitter and Receiver

- ▶ All the features of the HD-TX1/RX1-F, plus:
 - ▶ Extends analog stereo audio signals
 - ▶ Includes mini-TRS stereo audio connector
 - ▶ Extends USB HID mouse/keyboard signals
 - ▶ Extends 10/100 Ethernet LAN data



V-Panel

12" and 15" Touchpanel Displays

The V-Panel family of touchpanels delivers a whole new level of style and function in a fresh new design offering exceptional versatility and the latest in Crestron digital touchpanel technology. Sleek and beautiful, Crestron V-Panel Touchpanel Displays are perfectly at home sitting on a contemporary table or desktop, but are equally suited for all kinds of custom installations thanks to integral VESA mount compatibility. Complete connectivity is provided through a single DigitalMedia™ cable connection, affording an extremely clean appearance while allowing for wiring distances up to 600 feet.

The V12 and V15 have been designed with appearance and versatility in mind. Virtually all the usual electronics has been removed from the display element, and relocated to a separate Digital Graphics Engine (DGE). This allows the touchpanel to be built smaller, lighter, cooler, and quieter. In fact, all models are less than 2 inches deep and contain no cooling fans.

Integral VESA 100 mounting holes allow the V12 and V15 to be mounted virtually anywhere using a third-party monitor stand, arm, under-cabinet mount, or wall mount. A tabletop tilt version of each model is also available, adding a very sleek looking smooth-tilt base with integrated DM cable for a clean, low-profile appearance. Finally, the wall mount version achieves a nearly flush appearance, with a very thin, paintable border just .82" wide surrounding the touchscreen. Multiple wall mounting options are offered, with the ability to install into shallow spaces as little as 2 inches deep.

All V-Panel models are available in white or black, and feature built-in microphone and stereo speakers, and a USB keyboard/mouse port. The V12 has a 12" 800 x 600 touchscreen display, while the V15 boasts a 15" widescreen 1280 x 768 touchscreen display.

V-Panel is the world's first touchpanel control solution to support HDCP.



DGE

Digital Graphics Engines

Two DGE models are offered, both designed to be installed in the central equipment cabinet, allowing direct connection to the AV sources and switchers, eliminating the need to run any extra wiring to the touchpanel location. Both models feature our 24-bit Isys i/O® graphics, plus embedded Web browsing and other PC applications, IP intercom, streaming audio and video, MediaMarker™ annotation, CH CAT5 audio connectivity, and new Crestron SIP phone capability.

The DGE-1 also supports single-window full-motion video from a composite or S-Video source, and balanced stereo audio in and out.

The DGE-2 supports dual-window high-definition video and computer display from multiple sources, and delivers the world's first touchpanel control solution to support HDCP for complete compatibility with today's digital sources! It includes (2) HDMI/HDCP inputs, (2) RGB/VGA inputs, (2) composite/S-Video/component video inputs, and balanced stereo audio. It also includes HDMI, RGB, and balance audio outputs.



See page 19 for additional details.

TPMC-3X

Isys i/O® 2.8" Handheld WiFi Touchpanel

Wi-Fi Performance—Redefined!

Crestron has redefined Wi-Fi wireless performance with the new TPMC-3X Handheld WiFi Touchpanel. Extra long-range, omni-directional RF coverage ensures exceptional freedom of movement without line-of-sight! The choice of 802.11 a, b, and g protocols affords reliable, high-speed 2-way wireless performance in virtually any RF environment. The TPMC-3X even supports roaming among multiple access points for extended coverage. A network of one or more TPMC-3Xs can be set up in mere minutes, using a Crestron CEN-WAP-ABG Wireless Access Point.

Instant-Waking

To ensure the most transparent user experience possible, the TPMC-3X has been engineered to wake instantly at the press of a button, tap of the touchscreen, or by simply tilting the remote upright. Button presses are sent immediately, just like an IR remote, so spontaneous actions like muting the audio, pausing the video, or changing the channel can be executed on-the-fly with just a single button press. Instant waking also allows the remote to be put to sleep within seconds of putting it down, affording incredibly long battery life.

The Ultimate Handheld Remote

Gone are the limitations of previous generation remotes, and the frustration of using them. The TPMC-3X offers seamless interaction with AV and environmental systems, providing true feedback of settings and metadata information for all your digital media. Its sleek, ergonomic body with large, widely-spaced buttons accommodates hands and fingers of all sizes, with electroluminescent backlighting for use in a darkened room. Custom touchpanel versatility is afforded through a brilliant 2.8" active-matrix touchscreen. Its built-in streaming video player makes it possible to monitor a camera or preview a DVD or television channel right on the touchscreen display.

TableTop Docking Station

The TPMC-3X makes an elegant statement in any room, especially when placed on its stylish docking station. When docked, the touchpanel sits at-the-ready, able to be used as a stationary tabletop controller while charging. A wall mount docking station is also available.

- ▶ 802.11a/b/g Wi-Fi wireless communications
- ▶ Exceptional coverage and range
- ▶ Instant waking behavior with tilt sensor
- ▶ Stylish and ergonomic handheld design
- ▶ Sleek-looking tabletop docking station
- ▶ Elegant gloss black finish
- ▶ Optimized layout of 27 tactile pushbuttons
- ▶ White EL backlit button text
- ▶ 2.8" active matrix color touchscreen
- ▶ High display brightness and contrast
- ▶ Wide 150 degrees viewing angle
- ▶ 16-bit Isys i/O graphics
- ▶ 240 x 320 resolution
- ▶ Dynamic graphics & text capability
- ▶ Synapse™ Image Rendering Algorithm
- ▶ DNav Dynamic Menu Objects
- ▶ Wireless streaming video
- ▶ WAV file audio feedback
- ▶ Supports roaming between access points
- ▶ Long-lasting LiPo rechargeable battery

TPMC-3X

Isys i/O® 2.8" Handheld WiFi Touchpanel

Instant waking—works just like an IR remote with all the benefits of 2-way RF!



TPMC-4SM

Isys i/O® 4.3" Wall Mount Touchpanel Media Center

With its clean, contoured appearance, the Isys i/O TPMC-4SM Wall Mount Touchpanel Media Center makes an elegant statement in any environment. Perfectly at home in the most modern residence, hotel, or office building, its high-tech good looks underline its power for simplifying everyday tasks and functions, all in a very affordable device that's versatile and easy to install.

An incredibly thin profile and small footprint allow the TPMC-4SM to be installed in places other touchpanels just can't go, providing the choice of mounting to a standard electrical box or to virtually any flat surface — even glass, tile, granite, or marble. A table top enclosure is also available, affording a very stylish, space-saving solution for placement on a desktop or bedside table. Complete connectivity is provided through a single high-speed Ethernet connection, containing all control, video, intercom, and power signals within a single wire.

The TPMC-4SM packs the latest Crestron digital touchpanel technology, delivering amazing new graphics capabilities, plus streaming video and 2-way IP intercom. Other new features include dual-color backlit buttons, built-in proximity sensor, PoE network power, and occupancy sensor inputs.

A multi-use interface that is ultra-thin, affordable, and easy to install.



- ▶ Modern, contoured appearance
- ▶ Thin profile and small footprint
- ▶ Affordable and easy to install
- ▶ 4.3" widescreen color touchscreen
- ▶ 16-bit Isys i/O graphics
- ▶ 800 x 480 resolution
- ▶ Synapse™ image rendering algorithm
- ▶ DNav dynamic menu objects
- ▶ Streaming video
- ▶ Crestron IP intercom
- ▶ WAV file audio feedback
- ▶ Built-in microphone and speaker
- ▶ Built-in proximity sensor
- ▶ 10 optional "hard key" pushbuttons
- ▶ Dual-color button backlighting & feedback
- ▶ Engravable button text
- ▶ Room occupancy sensor option
- ▶ Single-wire Ethernet connectivity
- ▶ PoE network powered
- ▶ Available in smooth black or white
- ▶ Fits in a horizontal 1-gang or Euro back box
- ▶ Available tabletop and multi-surface mount kits



iPhone Apps

Crestron Mobile™ and Crestron Mobile Pro™

Imagine using your iPhone as a remote for your home automation system, home or away. The Crestron Mobile Pro™ App for iPhone® and Crestron Mobile™ put a Crestron touchpanel user interface right on the popular Apple® iPhone or iPod touch®, enabling all kinds of customizable control capability.

Control multiple locations, such as a primary residence, vacation home and office, from a single, intuitive graphical interface that provides real-time control of room temperature, shade positions and lighting levels. With the Mobile Pro™ App, you can additionally access local AV devices and digital media metadata including album, song and artist.

Crestron iPhone apps talk directly to the control system without any third-party software or external servers. On the road, the iPhone communicates with the Crestron control system over the 3G network or EDGE cellular network. At home or away, both your iPhone and iPod® touch can connect via Wi-Fi.

View room and system status, adjust lighting, HVAC and security - all in real time. The iPhone keeps you Crestron-connected, wherever you are.



New locations are easily added by opening the “Connections” page on the iPhone; customized buttons, graphics and dynamic text can be added by your installer. Updates or changes to the control program are automatically sent to the iPhone when the Crestron app is launched.

With a large library of built-in graphics to aid in custom designs, Crestron iPhone Apps put a virtual Crestron touchpanel in the palm of your hand for complete mobile control.

Crestron® Interfaces for Apple iPod®

Crestron offers three great ways to harness the power of the popular iPod personal media player. Your iPod (or iPhone®) accompanies you on walks, when you're exercising, and driving in the car. It contains all your favorite music and videos. So it's only natural you should be able to plug it in at home and enjoy it throughout the house.

The CEN-IDOCV from Crestron lets you simply place your iPod in the stylish docking station and instantly explore and control it from touchpanels, keypads, remotes, and computers anywhere in the home. Both audio and video signals can be distributed to speakers and video displays in any room. It even syncs with iTunes® running on a home computer right over the home LAN without undocking.

The new CEN-IDOCV-DSW provides the same convenience in a recessed wall mount format, and adds a front panel volume control and the ability to switch between controlling the iPod directly or through the Crestron control system.

The Crestron iServer™ (CEN-ISERVER) is an affordable network audio server that uses the iPod as its engine. Designed for shelf or rack mount installation, the iServer provides a permanent housing for the iPod, affording full-time access to the iPod through the whole-house Crestron system.

Common Features:

- ▶ Enables full 2-way touchpanel control of the iPod®
- ▶ Displays metadata and album cover art
- ▶ Plays audio throughout the home or office
- ▶ Views video files on a video touchpanel or display
- ▶ Syncs to iTunes® over Ethernet
- ▶ Affords plug-and-play integration with Adagio®
- ▶ iPod, iPod® touch, and iPhone® compatible

Crestron integration with Apple is the perfect marriage of content and technology.



CEN-IDOCV Interface for Apple iPod®

- ▶ Connects to iPod via cable or docking station
- ▶ Charges the iPod battery
- ▶ PoE network powered
- ▶ Includes CAT5 Balanced AV connectivity
- ▶ Docking station available in white or black



CEN-IDOCV-DSW Wall Mount Interface for Apple iPod®

- ▶ Convenient in-wall docking station
- ▶ Includes front panel volume control
- ▶ Allows local control mode
- ▶ Charges the iPod battery
- ▶ PoE network powered
- ▶ Includes CAT5 Balanced AV connectivity
- ▶ Available in white or black



CEN-ISERVER iServer Network Audio Server

- ▶ Harnesses the iPod as its engine
- ▶ Provides buffered audio and video outputs
- ▶ Includes CAT5 Balanced AV connectivity
- ▶ Single-space 19" rack-mountable

NEW!



PMC2
Prodigy™ Media
Controller

- ▶ Supports touchpanels, remotes, keypads, thermostats, dimmers and switches
- ▶ Supports Web-based control from PCs, laptops and mobile devices

- ▶ Simple configuration with Prodigy Composer software

NEW!



PTX3
Prodigy™ Handheld
Remote

- ▶ Single press turns on your system and triggers presets
- ▶ Ergonomic design provides easy control for any member of the family
- ▶ 27 individual pushbuttons provides intuitive, tactile control

- ▶ Up to six PTX3s can be used with the PMC2 with reliable communications, even through walls
- ▶ Instant-Waking™ technology means instant access and control

NEW!



PTL4
Prodigy™ In-Wall
Touchpanel

- ▶ Simple control of home entertainment, lights and thermostats throughout the house
- ▶ Easy installation via standard Ethernet connection

- ▶ Built-in design templates provided

NEW!



PLX2
Prodigy™ LCD Handheld
Remote

- ▶ Elegant high gloss finish
- ▶ 2-way RF wireless technology
- ▶ 57 programmable buttons with blue EL backlight

- ▶ Backlit LCD screen w/dynamic text display
- ▶ Operates on 4 AAA alkaline batteries

NEW!



P-DIMRF-6
Prodigy™ 2-Way Single
Button Wireless Dimmer

- ▶ Control lights directly or access preset levels
- ▶ Simple wireless installation in a standard 1-gang box

- ▶ Automatic discovery for fast, easy setup
- ▶ Built on the fastest, most reliable Crestron communications network

NEW!



P-SWRF-6
Prodigy™ 2-Way Single
Button Wireless Switch

- ▶ Control lights directly or access preset levels
- ▶ Simple wireless installation in a standard 1-gang box

- ▶ Automatic discovery for fast, easy setup
- ▶ Built on the fastest, most reliable Crestron communications network

NEW!



P-CBD-6
Prodigy™ 2-Way
Wireless Lighting
Keypad

- ▶ Low cost room controller for lighting; pre-engraved buttons included
- ▶ Configurable with two or four buttons
- ▶ Simple wireless installation in a standard 1-gang box

- ▶ Automatic discovery for fast, easy setup
- ▶ Built on the fastest, most reliable Crestron communications network

NEW!



P-TSTATRF
Prodigy™ 2-Way
Wireless Thermostat

- ▶ Controls baseboard, forced air and heat pump HVAC systems
- ▶ Adjust setpoints from thermostat, remotes and touchpanels
- ▶ Connect up to three thermostats
- ▶ Simple wireless installation in a standard 1-gang box
- ▶ Automatic discovery for fast, easy setup
- ▶ Built on the fastest, most reliable Crestron communications network

NEW!



PAMP-4X100
Prodigy™ Multi-Zone
Amplifier

- ▶ Provides high quality stereo audio to multiple rooms and home theater
- ▶ Six audio sources to four rooms at 50 watts per channel
- ▶ Expandable up to 12 rooms
- ▶ Adjust levels and select sources from front panel, remotes, touchpanels and keypads

NEW!



P-IDOCV
Prodigy™ Interface for
Apple® iPod®

- ▶ Watch videos and listen to music from up to two iPods throughout the home
- ▶ View cover art; select titles, artists and albums – even scroll through playlists right from from Prodigy remotes and touchpanels, iPhone™ and iPod touch®
- ▶ Automatically syncs with iTunes® without undocking

NEW!



PT-AMFMXM
Prodigy™ AM, FM, XM
Tuner

- ▶ Select audio in any room in the house from built-in AM/FM/XM tuners
- ▶ Select channel presets from keypads and view station and song information from Prodigy remotes and touchpanels, iPhone and iPod touch®

NEW!



P-CBD-AD-4
Prodigy™ 2-Way
Wireless Audio Keypad

- ▶ Low cost six button room controller for audio source select and volume
- ▶ Simple wireless installation in a standard 1-gang box
- ▶ Automatic discovery for fast, easy setup
- ▶ Built on the fastest, most reliable Crestron communications network

NEW!



P-RFEXP
Prodigy™ Wireless
Expander

- ▶ Extends range up to 150' indoors
- ▶ Expandable up to 10 rooms
- ▶ Automatic discovery for fast, easy setup
- ▶ Wi-Fi friendly channel assignment

NEW!



P-MNETGW
Prodigy™ Wireless
Gateway

- ▶ Supports dimmers, switches, keypads and thermostats
- ▶ Up to 150' range indoors
- ▶ Automatic discovery for fast, easy setup
- ▶ Wi-Fi friendly channel assignment

NEW!



**V12
V15**
V-Panel Touchpanel
Displays

- ▶ Sleek, beautiful and versatile
- ▶ Delivers high-definition graphics and video
- ▶ VESA 100 compatible mounting affords endless install options
- ▶ Low-profile design — less than 2 inches deep
- ▶ Choice of 12" 800x600 or 15" 1280x768 displays
- ▶ Simple, minimal wiring using DigitalMedia™ technology

- ▶ Digital Graphics Engine (DGE) mounts separately up to 600 feet away
- ▶ Built-in microphone and stereo speakers
- ▶ USB keyboard/mouse port
- ▶ Cool, quiet fanless design
- ▶ Available in white or black

NEW!



**V12-TILT
V15-TILT**
V-Panel Tilt Touchpanel
Displays

- ▶ Tabletop tilt version of the V12 and V15
- ▶ Includes sleek, modern looking smooth-tilt base
- ▶ Affords a very clean, low-profile appearance on any tabletop

- ▶ Integrated DM CAT cable for flexible placement and minimal aesthetic impact
- ▶ Available in white or black

NEW!



**V12-WALL
V15-WALL**
V-Panel Wall Mount
Touchpanel Displays

- ▶ Wall mount version of the V12 and V15
- ▶ Achieves a very clean, nearly flush appearance
- ▶ Features a thin, paintable border just .82" wide

- ▶ Affords a mounting depth under 2 inches
- ▶ Multiple mounting options available
- ▶ Available in white or black

NEW!



DGE-1
Digital Graphics Engine

- ▶ Provides touchpanel graphics and video processing for all V-Panels
- ▶ Installs in the central equipment cabinet instead of at the V-Panel location
- ▶ Allows V-Panels to be smaller, cooler, and quieter
- ▶ Eliminates bulky, unsightly wiring at the V-Panel location
- ▶ Connects to the V-Panel via a single DigitalMedia™ cable
- ▶ V-Panel may be up to 600 feet away
- ▶ Features 24-bit Isys i/O® touchpanel graphics
- ▶ Multi-format streaming video and audio
- ▶ Single-window full-motion video

- ▶ Wired and IP intercom capability
- ▶ Crestron SIP phone capability
- ▶ Embedded PC Applications for Web browsing, playing or streaming digital media, accessing and controlling external computers, and viewing Adobe® Acrobat® and MS Word, Excel®, PowerPoint® files
- ▶ Crestron MediaMarker™ interactive annotation
- ▶ Composite/S-Video video input
- ▶ Balanced stereo audio input and output
- ▶ Crestron Home® (CH) CAT5 bidirectional audio port
- ▶ 10/100 high-speed Ethernet and Cresnet®
- ▶ Single space rack-mountable enclosure

NEW!



DGE-2
Digital Graphics Engine

- ▶ Provides touchpanel graphics and HD video processing for all V-Panels
- ▶ Installs in the central equipment cabinet instead of at the V-Panel location
- ▶ Allows V-Panels to be smaller, cooler, and quieter
- ▶ Eliminates bulky, unsightly wiring at the V-Panel location
- ▶ Connects to the V-Panel via a single DigitalMedia™ cable
- ▶ V-Panel may be up to 600 feet away
- ▶ Features 24-bit Isys i/O® touchpanel graphics
- ▶ Multi-format streaming video and audio
- ▶ Dual-window full-motion HD video
- ▶ Handles HDTV sources up to 1080p60 and high-res computers up to UXGA/WUXGA

- ▶ Wired and IP intercom capability
- ▶ Crestron SIP phone capability
- ▶ Embedded PC Applications for Web browsing, playing or streaming digital media, accessing and controlling external computers, and viewing Adobe® Acrobat® and MS Word, Excel®, PowerPoint® files
- ▶ Crestron MediaMarker™ interactive annotation
- ▶ (2) HDMI/HDCP, (2) RGB, and (2) composite/S-Video/component video inputs
- ▶ HDMI and RGB display outputs (in addition to DM)
- ▶ Balanced stereo audio input and output
- ▶ Crestron Home® (CH) CAT5 bidirectional audio port
- ▶ 10/100 high-speed Ethernet and Cresnet®
- ▶ Two space rack-mountable enclosure

Isys™ Wireless Touchpanels



TPS-6X
Isys™ 5.7" Wireless
Touchpanel

- ▶ Lightweight contoured design for handheld use
- ▶ Tabletop tilt touchpanel operation
- ▶ High gloss black or white, or matte black finishes
- ▶ Stylish tabletop tilt docking station
- ▶ Optional illuminated buttons
- ▶ Engravable backlit button text
- ▶ 5.7" active matrix color touchscreen
- ▶ 16-bit Isys graphics
- ▶ 640 x 480 resolution
- ▶ Dynamic graphics & text capability
- ▶ Synapse™ image rendering algorithm
- ▶ Full-motion video while docked
- ▶ High-performance 2.4 GHz RF wireless
- ▶ Up to 200 feet RF range indoors
- ▶ **NEW!** Roaming capability
- ▶ 1-way IR wireless capability
- ▶ NiMH rechargeable battery pack
- ▶ Wired Ethernet and Cresnet®
- ▶ Crestron Home® CAT5 video

NEW!



TPS-6XWALL
Isys™ 5.7" Wall Mount
Wireless Touchpanel

- ▶ Wall mount version of the TPS-6X
- ▶ Affords wall mount touchpanel operation
- ▶ Easily undocks for wireless freedom
- ▶ Wired Ethernet or Cresnet®
- ▶ Crestron Home® CAT5 video
- ▶ High-gloss black or white, or matte black
- ▶ Multiple mounting options available

Isys i/O® WiFi Touchpanels

NEW!



TPMC-3X
Isys i/O® 2.8" Handheld
WiFi Touchpanel

- ▶ Sleek and ergonomic handheld design
- ▶ Stylish tabletop docking station
- ▶ Elegant gloss black finish
- ▶ Instant-Waking™ behavior with tilt sensor
- ▶ Works like an IR remote — with all the benefits of 2-way RF!
- ▶ High-performance 802.11a/b/g Wi-Fi wireless communications
- ▶ 50 feet omnidirectional RF range indoors
- ▶ Supports roaming between multiple Wi-Fi access points
- ▶ Long-lasting LiPo rechargeable battery pack
- ▶ Widely-spaced tactile pushbuttons
- ▶ White EL backlit button text
- ▶ 2.8" active matrix color touchscreen display
- ▶ High display brightness and contrast
- ▶ Wide 150 degrees viewing angle
- ▶ 16-bit Isys i/O® graphics
- ▶ 240 x 320 resolution
- ▶ Dynamic graphics & text capability
- ▶ Synapse™ image rendering algorithm
- ▶ DNav dynamic menu objects
- ▶ Wireless video from network cameras and servers
- ▶ WAV file audio feedback
- ▶ Programmable via SystemBuilder™ and Adagio® Composer software

NEW!



TPMC-3X-DSW
Wall Mount Docking
Station

- ▶ Attractive storage and charging solution for the TPMC-3X
- ▶ "Coat-hook" design with magnetic catch
- ▶ 1-gang wall box mountable
- ▶ Accepts off-the-shelf decorative faceplates
- ▶ Powered by 24 Volts DC or Cresnet
- ▶ Available in black or white



TPMC-4XG
Isys i/O® 3.5" Handheld
WiFi Touchpanel

- ▶ Elegant gloss black finish
- ▶ Generous 3.5" active matrix touchscreen
- ▶ 16-bit Isys i/O graphics
- ▶ 240 x 320 resolution
- ▶ Synapse™ image rendering algorithm
- ▶ Backlit hard buttons, thumbpad, and scroll wheel
- ▶ Wireless streaming video
- ▶ 802.11b/g Wi-Fi 2-way wireless communications
- ▶ Includes stylus with onboard storage slot
- ▶ Li-Ion rechargeable battery pack
- ▶ Stylish docking station



TPMC-8X

Isys i/O® 8.4" WiFi Touchpanel

- ▶ Stylish and compact ergonomic design
- ▶ 2-way 802.11a/b/g Wi-Fi wireless
- ▶ 8.4" active matrix touchscreen
- ▶ 16-bit Isys i/O graphics
- ▶ 800 x 600 resolution
- ▶ Synapse™ image rendering algorithm
- ▶ DNav dynamic menu objects
- ▶ Onboard Web browsing, streaming media, conferencing, VoIP, VNC and remote desktop
- ▶ Wireless streaming video and audio
- ▶ WAV file audio feedback
- ▶ **NEW!** Crestron IP intercom
- ▶ **NEW!** Crestron SIP phone
- ▶ Built-in microphone and speakers
- ▶ Navigation pad and "hard key" buttons
- ▶ Biometric fingerprint scanner
- ▶ Li-Ion rechargeable battery pack
- ▶ Available "booster" battery pack



TPMC-8X-DS

Desktop Docking Station for TPMC-8X

- ▶ Charges the TPMC-8X internal battery
- ▶ Provides 37 degree tilt for desktop use
- ▶ 10/100 wired Ethernet connectivity
- ▶ Available USB mouse & keyboard



TPMC-8X-DSW

Wall Mount Docking Station for TPMC-8X

- ▶ Simultaneously charges the TPMC-8X internal battery and two external batteries
- ▶ Secure, flush touchpanel docking
- ▶ Affords wall mount touchpanel operation
- ▶ Released by passcode or fingerprint recognition
- ▶ 10/100 wired Ethernet connectivity
- ▶ Available USB mouse & keyboard
- ▶ Balanced audio line output



TPMC-8T

Isys i/O® 8.4" TableTop WiFi Touchpanel

- ▶ 8.4" active matrix touchscreen
- ▶ Wired 10/100 Ethernet and 802.11a/b/g Wi-Fi
- ▶ 16-bit Isys i/O graphics
- ▶ 800 x 600 resolution
- ▶ Synapse™ image rendering algorithm
- ▶ DNav dynamic menu objects
- ▶ Onboard Web browsing, streaming media, conferencing, VoIP, VNC and remote desktop
- ▶ Streaming video and audio
- ▶ WAV file audio feedback
- ▶ **NEW!** Crestron IP intercom
- ▶ **NEW!** Crestron SIP phone
- ▶ Built-in microphone and speakers
- ▶ Navigation pad and "hard key" buttons
- ▶ Biometric fingerprint scanner

Isys™ Wall Mount Touchpanels

NEW!



TPMC-4SM

Isys i/O® 4.3" Wall Mount Touchpanel Media Center

- ▶ Modern, contoured appearance
- ▶ Thin profile and small footprint
- ▶ Affordable and easy to install
- ▶ 4.3" widescreen color touchscreen
- ▶ 16-bit Isys i/O graphics
- ▶ 800 x 480 resolution
- ▶ Synapse™ image rendering algorithm
- ▶ DNav dynamic menu objects
- ▶ Streaming video
- ▶ Crestron IP intercom
- ▶ WAV file audio feedback
- ▶ Built-in microphone and speaker
- ▶ Built-in proximity sensor
- ▶ 10 optional "hard key" pushbuttons
- ▶ Dual-color button backlighting and feedback
- ▶ Engravable button text
- ▶ Room occupancy sensor option
- ▶ Single-wire Ethernet connectivity
- ▶ PoE network powered
- ▶ Available in smooth black or white
- ▶ Fits in a horizontal 1-gang or Euro back box
- ▶ Available tabletop and multi-surface mount kits



Isys™ Wall Mount Touchpanels

NEW!



TPS-4L

Isys™ 3.6" Wall Mount Touchpanel

- ▶ 3.6" active matrix color touchscreen
- ▶ 16-bit Isys graphics
- ▶ 320 x 240 resolution
- ▶ Synapse™ image rendering algorithm
- ▶ 10 backlit pushbuttons
- ▶ Engravable faceplate
- ▶ WAV file audio feedback
- ▶ High-speed Ethernet and Cresnet®
- ▶ 10 designer colors



TPS-6L

Isys™ 5.7" Wall Mount Touchpanel

- ▶ 5.7" active matrix color touchscreen
- ▶ 16-bit Isys graphics
- ▶ 640 x 480 resolution
- ▶ Synapse™ image rendering algorithm
- ▶ Full-motion video
- ▶ Built-in microphone and optional speaker
- ▶ 12 optional "hard key" pushbuttons
- ▶ Engravable backlit button text
- ▶ WAV file audio feedback
- ▶ Light sensor
- ▶ Crestron Home® CAT5 AV
- ▶ High-speed Ethernet and Cresnet®
- ▶ Available in almond, black, or white
- ▶ Wall and rack mounting options



TPMC-8L

Isys i/O® 8.4" Wall Mount Touchpanel Media Center

- ▶ 8.4" active matrix touchscreen
- ▶ 16-bit Isys i/O graphics
- ▶ 800 x 600 resolution
- ▶ Synapse™ image rendering algorithm
- ▶ DNav dynamic menu objects
- ▶ Onboard Web browsing, streaming media, conferencing, VoIP, VNC and remote desktop
- ▶ Streaming video and audio
- ▶ WAV file audio feedback
- ▶ **NEW!** Crestron IP intercom
- ▶ **NEW!** Crestron SIP phone
- ▶ Built-in microphone and speakers
- ▶ Balanced audio line output
- ▶ 16 optional "hard key" pushbuttons
- ▶ Engravable backlit button text
- ▶ Biometric fingerprint scanner
- ▶ Light sensor
- ▶ High-speed Ethernet
- ▶ Available USB mouse & keyboard
- ▶ Available in almond, black, white, or stainless steel
- ▶ Wall and rack mounting options

NEW!



TPMC-12L

Isys i/O® 12" Wall Mount Touchpanel Media Center

- ▶ 12" active matrix touchscreen
- ▶ 24-bit Isys i/O graphics
- ▶ 800 x 600 resolution
- ▶ Synapse™ image rendering algorithm
- ▶ DNav dynamic menu objects
- ▶ Full-motion video
- ▶ Onboard Web browsing, streaming media, VNC and remote desktop
- ▶ Streaming video and audio
- ▶ WAV file audio feedback
- ▶ Built-in microphone and speakers
- ▶ QuickMedia® and Crestron Home® CAT5 AV
- ▶ High-speed Ethernet and Cresnet®
- ▶ Available USB mouse & keyboard
- ▶ Available in black or white
- ▶ Wall and rack mounting options



TPS-15L

TPS-17L

Isys™ Wall Mount Touchpanels

- ▶ 15" and widescreen 17" touchscreens
- ▶ 24-bit Isys graphics
- ▶ Synapse™ image rendering algorithm
- ▶ DNav dynamic menu objects
- ▶ Full-motion video
- ▶ Built-in microphone and speakers
- ▶ QuickMedia® and Crestron Home® CAT5 AV
- ▶ High-speed Ethernet and Cresnet®
- ▶ Available in black or white
- ▶ Wall and rack mounting options

Isys™ Wall Mount Touchpanels

23



TPS-12G-QM-L TPS-15G-QM-L TPS-17G-QM-L **NEW!**

Isys™ G-Series Wall Mount Touchpanels

- ▶ 12", 15" and widescreen 17" touchscreens
- ▶ 24-bit Isys graphics
- ▶ Synapse™ image rendering algorithm
- ▶ DNav dynamic menu objects
- ▶ Dual-window HDTV and RGB video
- ▶ Crestron "Touch-the-PC" capability

- ▶ Built-in microphone and speakers
- ▶ QuickMedia® AV connectivity
- ▶ Audio and graphics output
- ▶ High-speed Ethernet and Cresnet®
- ▶ Available in black or white
- ▶ Wall and rack mounting options

Isys™ Tilt Touchpanels

NEW!



TPMC-12 Isys i/O® 12" Tilt Touchpanel Media Center

- ▶ Slimline tiltcase design
- ▶ 12" active matrix touchscreen
- ▶ 24-Bit Isys i/O graphics
- ▶ 800 x 600 resolution
- ▶ Synapse™ image rendering algorithm
- ▶ DNav dynamic menu objects
- ▶ Full-motion video
- ▶ Interactive annotation
- ▶ Onboard Web browsing, streaming media, VNC and remote desktop

- ▶ Streaming video and audio
- ▶ WAV file audio feedback
- ▶ Built-in microphone and speakers
- ▶ QuickMedia® and Crestron Home® CAT5 AV
- ▶ High-speed Ethernet and Cresnet®
- ▶ Available USB mouse & keyboard
- ▶ Available in black or white



TPS-15B/W TPS-17B/W Isys™ Tilt Touchpanels

- ▶ Slimline tiltcase design
- ▶ 15" and widescreen 17" touchscreens
- ▶ 24-Bit Isys graphics
- ▶ Synapse™ image rendering algorithm
- ▶ DNav dynamic menu objects
- ▶ Full-motion video

- ▶ Interactive annotation
- ▶ Built-in microphone and speakers
- ▶ QuickMedia® and Crestron Home® CAT5 AV
- ▶ High-speed Ethernet and Cresnet®
- ▶ Available in black or white



TPS-12G-QM TPS-15G-QM TPS-17G-QM **NEW!** Isys™ Tilt Touchpanels

- ▶ 12", 15" and widescreen 17" touchscreens
- ▶ 24-Bit Isys graphics
- ▶ Synapse™ image rendering algorithm
- ▶ DNav dynamic menu objects
- ▶ Dual-window HDTV and RGB video
- ▶ Crestron "Touch-the-PC" capability

- ▶ Interactive annotation
- ▶ Built-in microphone and speakers
- ▶ QuickMedia® AV connectivity
- ▶ Audience presentation output
- ▶ High-speed Ethernet and Cresnet®
- ▶ Tabletop tiltcase housing

Network Video Streamer

NEW!



CEN-NVS100 Network Video Streamer

- ▶ Enables touchpanel display of security cameras over a wired or wireless network
- ▶ Real-time Motion-JPEG compression
- ▶ 704x480/704x576 NTSC/PAL max resolution
- ▶ Supports simultaneous dual streams
- ▶ Supports privacy masks

- ▶ Triple-window motion detection sensor and alarm I/O
- ▶ RS-485 PTZ camera control
- ▶ PoE network powered
- ▶ Surface or rack rail mounting

Handhelds



MLX-2
inifINET EX™ LCD
Handheld Remote

- ▶ inifINET EX 2-way RF wireless technology
- ▶ Ergonomic handheld design
- ▶ Elegant high gloss finish
- ▶ 57 EL backlit buttons

- ▶ Backlit LCD screen w/dynamic text display
- ▶ Operates on 4 AAA alkaline batteries



ML-600
MiniLCD Handheld
Remote

- ▶ 1-way RF or IR wireless communication
- ▶ Ergonomic handheld design
- ▶ Programmable LCD screen

- ▶ 47 programmable buttons
- ▶ EL backlighting of LCD screen and buttons
- ▶ Operates on 4 AAA alkaline batteries



MT-1000C
MiniTouch Handheld
Wireless Touchpanel

- ▶ Stylish and ergonomic handheld design
- ▶ 3.8" active matrix color touchscreen
- ▶ 16-bit Isys graphics
- ▶ 320 x 240 resolution

- ▶ Backlit buttons and 5-way thumbpad
- ▶ WAV file audio feedback
- ▶ 1-way RF or IR wireless
- ▶ Tabletop docking station charger



WPR-48
Waterproof Handheld
Remote

- ▶ Safe to use in the shower or hot tub
- ▶ Ruggedized and fully immersible
- ▶ 9 multi-function toggle pushbuttons
- ▶ Configurable for 9, 18, 27, or 48 functions

- ▶ Customizable labels with EL backlighting
- ▶ 1-way RF or IR wireless
- ▶ Tabletop docking station charger

Home Theater

NEW!



PSPHD
PROCISE™ High-
Definition Surround
Sound Processor

- ▶ Professional 7.3 surround sound processor and preamplifier
- ▶ Designed for high-end home theaters, audiophile listening rooms, boardrooms, and auditoriums
- ▶ Handsome appearance befitting the most high-end theater or living room
- ▶ Dual front panel VFDs display real-time analog VU meters or spectrum analyzers
- ▶ Setup, control, and monitoring enabled via front panel or Crestron PROCISE Tools software
- ▶ Features Audyssey MultEQ® XT, Dynamic EQ, and Dynamic Volume
- ▶ Works with Crestron CCSTK Professional Surround Sound Tuning Kit
- ▶ Decodes Dolby® TrueHD 7.1 and DTS-HD Master Audio™ 7.1 HBR formats
- ▶ Includes balanced XLR and unbalanced RCA connections on all outputs
- ▶ Available graphic or parametric EQ and delay adjustment on each theater output
- ▶ Extensive bass management through three independent subwoofer outputs
- ▶ Extensive signal steering for custom applications and speaker configurations
- ▶ Separate stereo and mono down-mix outputs for recording or multi-zone

- ▶ Six HDMI™ inputs support 7.1 HD multi-channel audio and 1080p60 video
- ▶ Features QuickSwitch HD™ technology for low-latency switching
- ▶ HDMI output contains HD video plus unprocessed 7.1 or 2-channel downmix audio
- ▶ Supports HDCP to ensure compatibility with protected sources and equipment
- ▶ One AES/EBU, four optical, and six coaxial digital inputs
- ▶ One balanced XLR stereo analog input
- ▶ Eight unbalanced RCA stereo analog inputs
- ▶ One 7.1 multi-channel analog input
- ▶ Integrates perfectly with Crestron DigitalMedia™ products via HDMI in and out
- ▶ Integrates cleanly into multimedia presentation and telepresence systems
- ▶ Includes three mix inputs for connecting mic mixers, teleconferencing codecs, paging systems, and audio signal generators
- ▶ Mix inputs feature independent EQ, notch filters, gating and compression
- ▶ Native Crestron system integration via Ethernet or Cresnet®
- ▶ Extensively programmable, with numerous presets and assignable defaults for most settings
- ▶ 3U 19" rack-mountable (rack ears included)

NEW!



PROAMP-7X400

PROCISE™ High-Definition Surround Sound Amplifier

- ▶ Professional 7-channel power amplifier
- ▶ 400 watts per channel FTC at 8 Ohms
- ▶ Stable to 4 Ohms, all channels driven
- ▶ 24k gold-plated XLR balanced input connectors
- ▶ 7-channel XLR cable kit available separately
- ▶ Designed to match the PSPHD in performance and appearance
- ▶ 5U 19" rack-mountable (rack ears included)
- ▶ Front panel signal, clip, and fault indicators for each channel
- ▶ Native Crestron system integration via Ethernet or Cresnet®
- ▶ Remote controllable power, master mute, and channel mute
- ▶ Remote monitoring of operating temperature, channel signal presence, channel clipping, channel fault, channel overcurrent, and speaker short circuit detection
- ▶ Controllable and monitored through the PSPHD



CNAMPX-7X200

7 Channel Surround Sound Amplifier

- ▶ 7 channels of world-class audio amplification
- ▶ 200 watts/ch. @ 8 ohms; 300 watts/ch. @ 4 ohms
- ▶ Massive twin toroidal transformers with MOH cores and bifilar windings
- ▶ Separate power supply for each mono channel
- ▶ Convection-cooled modular component design
- ▶ Power control and temperature monitoring via Cresnet®



AMS-AIP

Adagio® Media System w/Advanced Image Processing

- ▶ Integrated surround sound processor and amplifier
- ▶ Audyssey MultEQ® XT advanced equalization
- ▶ 7 x 100W surround sound amplification
- ▶ High-definition analog and HDMI/DVI digital video switching
- ▶ Crestron QuickSwitch HD™ technology
- ▶ Gennum Visual Excellence Processing™
- ▶ TruMotionHD™ fully adaptive deinterlacing
- ▶ Optimizes input signals to match the display
- ▶ Up to 1600 x 1200 non-interlaced output
- ▶ Full 1080p60 HDTV support
- ▶ Advanced HDCP implementation
- ▶ Customizable onscreen graphics and menus
- ▶ Picture-in-Picture with alpha blending
- ▶ Audio distribution for 4 to 6 rooms
- ▶ Expandable up to 24 rooms using AAE
- ▶ Integrated 45W x 8 channel power amplifier
- ▶ Choice of room controllers and remotes
- ▶ Modular multi-channel AM/FM and SIRIUS XM Radio tuners
- ▶ Setup via front panel or Adagio Composer software
- ▶ Programmable whole-house automation control



DVPHD

High-Definition Digital Video Processor

- ▶ The ultimate video processor for home theaters and sports bars
- ▶ Watch multiple video and computer sources on one high-definition screen
- ▶ The only multi-window video processor available that supports HD video with HDCP!
- ▶ Provides up to 8 fully-scalable video windows with transition effects and QuickSwitch HD™
- ▶ Modular design accepts the choice of up to 8 simultaneous inputs
- ▶ Handles HDMI™, DVI, DisplayPort Multimode, and HD-SDI digital video sources
- ▶ Handles analog RGB, component, S-Video, and composite video sources
- ▶ Supports HDMI, DVI, and RGB display devices and touchscreen monitors
- ▶ Includes integrated Crestron Isys® graphics engine and touchpanel interface
- ▶ Features Gennum VXP™ high-definition scaling and de-interlacing
- ▶ Enables real-time annotation over high-definition video and computer images
- ▶ Supports resolutions up to WUXGA 1920 x 1200 and HDTV 1080p60
- ▶ Automatic input/output configuration via sync-detection and EDID
- ▶ Advanced HDCP compliance manages DRM for 4 digital sources and 4 displays
- ▶ Features built-in test patterns for easy setup and fine-adjustment
- ▶ Allows easy setup and operation via LCD front panel, touchscreen or mouse OSD, or Web browser
- ▶ Affords native Crestron® control system integration
- ▶ Includes high-speed Ethernet and Cresnet® communications

ADMS Intermedia Delivery System™

NEW!



ADMS
Intermedia Delivery
System™

- ▶ Removes the boundaries between movies, music, TV, and the Internet
- ▶ Delivers all the content you want from DVDs, Blu-ray Discs, CDs, MP3s, iTunes®, Windows Media®, Netflix®, Amazon.com®, YouTube® and virtually any other online source you desire
- ▶ Organizes everything in an intuitive on-screen or touchpanel user interface
- ▶ Allows easy searching by title, actor, artist, genre, etc.
- ▶ WorldSearch™ instantly finds the content you want – whether its on a hard drive, optical disc, or the Internet – and delivers it to your home theater in full HD and 7.1 surround sound
- ▶ Purchase or rent movies and videos right on-screen
- ▶ Integrated Web browser enables access to all your favorite Web sites
- ▶ Onboard Blu-ray Disc drive allows playing DVDs and importing CDs
- ▶ Up to 1000 disc external Blu-ray Disc® storage – adds every disc to your media library complete with cover art and metadata
- ▶ 1TB internal hard drive storage
- ▶ RAID 1 (mirrored) data loss prevention technology
- ▶ Expandable using NAS or Windows Home Server appliances
- ▶ Outputs 1080p high-definition video and 7.1 surround sound, plus 2 discrete zones of stereo audio
- ▶ Home Control screen enables onscreen control of lighting, climate, and other home automation functions
- ▶ Affords native Crestron® control system integration via Ethernet
- ▶ Gigabit LAN port enables ultra high-speed downloads and glitch-free streaming
- ▶ Front panel USB, 1394, and MMC ports enable easy transfer of home movies, photos, and music files
- ▶ Advanced HDCP support ensures compatibility with protected content
- ▶ Ultra secure and reliable operating system delivers a superior alternative to HTPCs
- ▶ Ultra-quiet design allows placement in the immediate listening environment
- ▶ VNC remote access enables off-premises dealer support and upgrade
- ▶ 3-space 19" rack-mountable (rack ears included)

NEW!



ADC-200BR
200-Disc Blu-ray Changer

- ▶ Adds an entire collection of movies to the ADMS library
- ▶ Provides storage for 200 DVDs and high-definition Blu-ray Discs
- ▶ Allows 100% legal storage of copyrighted content
- ▶ ADMS automatically adds each disc to the media library
- ▶ Connects easily to the ADMS via IEEE 1394
- ▶ Daisy-chain up to 5 units to store up to 1000 discs!

NEW!



CEN-NAS-4TB
4TB Network Attached
Storage

- ▶ Plug and play storage expansion for the ADMS
- ▶ Can store 1500 standard definition movie downloads
- ▶ Can store 150,000 songs in lossless format, and well over 300,000 compressed @ 320kbps
- ▶ Contains 4 high-performance Seagate® Pipeline HD™ Pro hard drives for quiet, reliable operation
- ▶ RAID 5 protection prevents any data loss if any single drive fails
- ▶ Front access drive bays allow hot swappable drive replacement
- ▶ Provides automatic email error notification
- ▶ Single-space 19" rack-mountable

NEW!



KB-RFUSB
Wireless Keyboard
w/Mousepad

- ▶ Navigate the ADMS on-screen interface and surf the Web from any seat in the room
- ▶ Compact RF wireless multimedia keyboard
- ▶ Keys for quick access to ADMS features
- ▶ Integrated 360 degree mouse pad
- ▶ Includes USB RF receiver dongle
- ▶ Available in white or black

NEW!



CEN-ISERVER
Creston iServer™
Network Audio Server

- ▶ “Made for iPod” network audio server
- ▶ Harnesses the Apple® iPod® as its engine
- ▶ Full 2-way touchpanel control
- ▶ Displays metadata and album cover art
- ▶ Syncs to iTunes® over Ethernet
- ▶ Buffered audio and video outputs
- ▶ CAT5 Balanced AV connectivity
- ▶ Plug-and-play integration with Adagio®
- ▶ Single-space 19" rack-mountable

NEW!



CEN-IDOCV
Interface for Apple iPod®
w/Video

- ▶ “Made for iPod” AV and control interface
- ▶ Connects to iPod via cable or docking station
- ▶ Full 2-way touchpanel control of the iPod
- ▶ Displays metadata and album cover art
- ▶ Plays audio throughout the home or office
- ▶ View video files on a video touchpanel or display
- ▶ Syncs to iTunes® over Ethernet
- ▶ Charges the iPod battery
- ▶ PoE network powered
- ▶ Includes CAT5 Balanced AV connectivity
- ▶ Plug-and-play integration with Adagio®
- ▶ Docking station available in white or black

NEW!



CEN-IDOCV-DSW
Wall Mount Interface for
Apple iPod®

- ▶ “Made for iPod” AV and control interface
- ▶ iPod, iPod touch®, and iPhone® compatible
- ▶ Convenient in-wall docking station
- ▶ Full 2-way touchpanel control of the iPod
- ▶ Displays metadata and album cover art
- ▶ Includes front panel volume control
- ▶ Plays audio throughout the home or office
- ▶ View video files on a video touchpanel or display
- ▶ Syncs to iTunes over Ethernet
- ▶ Charges the iPod battery
- ▶ PoE network powered
- ▶ Includes CAT5 Balanced AV connectivity
- ▶ Plug-and-play integration with Adagio®
- ▶ Available in white or black

NEW!



Creston Control™
App for iPhone®

- ▶ Application download from iPhone® App Store
- ▶ Communicates with 2-Series control system via WiFi and cellular network
- ▶ Control multiple homes from one iPhone®
- ▶ Full integration with Creston programming software
- ▶ Compatible with the original iPhone®, iPhone® 3G, and iPod touch®
- ▶ Large library of built-in graphics to aid in custom designs and to reduce download times on slower cell network



**e-Control SDK for
Adobe® Flash®
Component**

- ▶ Enable Creston e-Control® from any Flash 9 compatible browser, whether your client uses, Safari, Internet Explorer, Firefox or even the Apple iPhone®
- ▶ Create unique, dynamic, cool and interactive user interfaces
- ▶ Add control functionality to any Flash CS3 element
- ▶ Mac, Linux or PC- Control of your Creston system is just a touch away

NEW!



DM-MD8X8
8x8 DigitalMedia™
Switcher

- ▶ 8x8 modular DigitalMedia matrix switcher
- ▶ Uncompressed digital AV over CAT, fiber, or HDMI
- ▶ Supports a full range of input types
- ▶ Supports HDMI™ 1.3a with Deep Color
- ▶ Supports 7.1 channel HD lossless audio
- ▶ Resolutions up to 1920x1200 and 1080p60
- ▶ 450 feet cable length using DigitalMedia Cable
- ▶ 1000 feet cable length using CresFiber™
- ▶ Easy output expansion
- ▶ Detects and displays detailed signal information
- ▶ QuickSwitch HD™ low-latency switching
- ▶ Manages HDCP for every device
- ▶ Manages AV signal formats automatically
- ▶ Enables device control via CEC
- ▶ Distributes USB HID mouse/keyboard
- ▶ Audio and USB breakaway
- ▶ Audio distribution system integration
- ▶ Simultaneous stereo and multi-channel audio
- ▶ Integrated Ethernet switch
- ▶ Fast, simple setup and diagnostics
- ▶ 4-space 19" rack-mountable

NEW!



DM-MD16X16
16x16 DigitalMedia™
Switcher

- ▶ All the capabilities of the DM-MD8X8
- ▶ 16 modular inputs and outputs
- ▶ 7-space 19" rack-mountable
- ▶ Expandable for up to 96 independent outputs

NEW!



DMC
DM Switcher
Input Cards

- ▶ **DMC-HD** HDMI, DVI, or DisplayPort multimode input, HDMI pass-thru, 2-channel analog audio out, USB HID host port
- ▶ **DMC-HD-DSP** Same as DMC-HD with simultaneous 2-channel and multi-channel audio output
- ▶ **DMC-DVI** DVI and RGB input, balanced 2-channel analog audio input, HDMI pass-thru, USB HID host port
- ▶ **DMC-VID-BNC** BNC component, composite, or S-Video input; balanced 2-channel analog audio input, HDMI pass-thru
- ▶ **DMC-VID-RCA-A** RCA component, composite, or S-Video input; RCA 2-channel analog audio input, HDMI pass-thru
- ▶ **DMC-VID-RCA-D** RCA component, composite, or S-Video input; RCA coaxial SPDIF digital audio input, HDMI pass-thru
- ▶ **DMC-VID4** Quad composite video inputs, quad processing and sequential switching, text overlay, HDMI pass-thru
- ▶ **DMC-CAT** DM CAT input, HDMI pass-thru, 2-channel analog audio out
- ▶ **DMC-CAT-DSP** Same as DMC-CAT with simultaneous 2-channel and multi-channel audio output
- ▶ **DMC-F** DM Fiber input, HDMI pass-thru, 2-channel analog audio out
- ▶ **DMC-F-DSP** Same as DMC-F with simultaneous 2-channel and multi-channel audio output

NEW!



DMC0
DM Switcher
Output Cards

- ▶ Provide versatile combinations of DM Fiber, DM CAT, HDMI, and analog audio outputs
- ▶ 9 models available for DM-MD8X8
- ▶ 30 models available for DM-16X16
- ▶ Easily specified using online DigitalMedia Switcher Configuration Tool

NEW!



DM-RMC-100
DM CAT Receiver &
Room Controller

- ▶ Rear panel DM CAT input
- ▶ Supports up to 450 ft cable length
- ▶ HDMI™ display output
- ▶ USB HID keyboard/mouse device port
- ▶ 10/100 Ethernet LAN port
- ▶ RS-232, IR, digital in, & relay control ports
- ▶ Optional power current sensor
- ▶ Low profile design
- ▶ 2-gang, 4" square, or UK box mountable

NEW!



DM-RMC-100-F
DM Fiber Receiver &
Room Controller

- ▶ DM Fiber input
- ▶ Supports up to 1000 ft cable length
- ▶ HDMI™ display output
- ▶ USB HID keyboard/mouse device port
- ▶ 10/100 Ethernet LAN port

- ▶ RS-232, IR, digital in, & relay control ports
- ▶ Optional power current sensor
- ▶ Low profile design
- ▶ Surface mountable

NEW!



DM-RX1-1G
Wall Plate DM
CAT Receiver

- ▶ Front panel HDMI™ output
- ▶ Rear panel DM CAT input

- ▶ Supports up to 450 ft cable length
- ▶ 1-gang box mountable

NEW!



DM-TX1-1G
Wall Plate DM
CAT Transmitter

- ▶ Front panel HDMI™ input
- ▶ DVI & DisplayPort-Multimode compatible
- ▶ Rear panel DM CAT output

- ▶ Supports up to 450 ft cable length
- ▶ 1-gang box mountable

NEW!



DM-TX-100
DM CAT Transmitter 100

- ▶ HDMI™ input
- ▶ DVI & DisplayPort Multimode compatible
- ▶ USB HID host port
- ▶ IR and Ethernet control ports
- ▶ DM CAT output
- ▶ Supports up to 450 ft cable length

- ▶ Single-wire connection to a DM receiver or switcher
- ▶ Detects and reports detailed signal information
- ▶ Manages AV signal formats automatically
- ▶ Enables device control via CEC
- ▶ Easy setup and diagnostics
- ▶ Compact surface-mount design

NEW!



DM-TX-100-F
DM Fiber Transmitter 100

- ▶ HDMI™ input
- ▶ DVI & DisplayPort Multimode compatible
- ▶ USB HID host port
- ▶ IR and Ethernet control ports
- ▶ DM Fiber output

- ▶ Supports up to 1000 ft cable length
- ▶ Enables device control via CEC
- ▶ Easy setup and diagnostics
- ▶ Compact surface-mount design

NEW!



DM-TX-200
DM CAT Transmitter 200

- ▶ HDMI™ and RGB/component inputs
- ▶ DVI & DisplayPort Multimode compatible
- ▶ Mini-TRS stereo audio input
- ▶ USB HID keyboard/mouse device port
- ▶ DM CAT output
- ▶ Supports up to 450 ft cable length
- ▶ Single-wire connection to a DM receiver or switcher

- ▶ Detects and reports detailed signal information
- ▶ Manages AV signal formats automatically
- ▶ Enables device control via CEC
- ▶ Easy setup and diagnostics
- ▶ Extends the life of an analog-based AV system
- ▶ Compact surface-mount design
- ▶ Fits in a Wiremold® 6000 Series Raceway

NEW!



DM-TX-300
DM CAT Transmitter 300

- ▶ HDMI™, DVI-I, and multi-format analog video inputs
- ▶ DisplayPort Multimode compatible
- ▶ Balanced and unbalanced analog audio inputs
- ▶ SPDIF coaxial digital audio input
- ▶ USB HID keyboard/mouse device port
- ▶ IR, RS-232, and Ethernet control ports
- ▶ HDMI and DM CAT outputs
- ▶ Supports up to 450 ft cable length
- ▶ Single-wire connection to a DM receiver or switcher
- ▶ Detects and reports detailed signal information
- ▶ Manages AV signal formats automatically
- ▶ Enables device control via CEC
- ▶ Easy setup and diagnostics
- ▶ Extends the life of an analog-based AV system
- ▶ 1-space 19" rack-mountable

NEW!



DM-MD6X1
DigitalMedia™ Switcher

- ▶ Front panel switching controls
- ▶ HDMI™, RGB, and BNC multi-format analog video inputs
- ▶ DVI & DisplayPort-Multimode compatible
- ▶ Balanced analog audio inputs and output
- ▶ SPDIF coaxial digital audio input
- ▶ 3 DM CAT inputs
- ▶ USB HID host port
- ▶ Ethernet LAN port
- ▶ HDMI and DM CAT outputs
- ▶ Detects and reports detailed signal information
- ▶ Manages AV signal formats automatically
- ▶ Enables device control via CEC
- ▶ Easy setup and diagnostics
- ▶ Extends the life of an analog-based AV system
- ▶ 2-space 19" rack-mountable
- ▶ Built-in power supply

NEW!



DMCI
DigitalMedia™ Card Interface

- ▶ Allows use of a single DMC Input Card for a variety of interface functions
- ▶ Enables analog AV to HDMI™ conversion
- ▶ Enables merging DVI with analog audio to HDMI
- ▶ Allows extracting analog audio from HDMI
- ▶ Allows down-mixing multi-channel HDMI audio to stereo
- ▶ Allows extracting EDID from digital sources
- ▶ Allows generating EDID for analog sources
- ▶ Affords a Cresnet®-to-CEC control gateway
- ▶ Enables USB HID mouse/keyboard extension over Ethernet
- ▶ Affords a rack-mountable DM receiver
- ▶ Includes Cresnet® control system interface
- ▶ 1/2-space rack-mountable

NEW!



DM-DR
DigitalMedia™ CAT Repeater

- ▶ Enables up to 450 ft cable length for DM CAT signals
- ▶ Inserts inline every 75 to 200 feet
- ▶ Low profile design
- ▶ 2-gang, 4" square, or UK box mountable

NEW!



DM-CBL
DigitalMedia™ Cable

- ▶ Single-cable solution for DM CAT based systems
- ▶ High-bandwidth, low crosstalk design
- ▶ Available plenum or non-plenum
- ▶ Easy termination using DM-CONN connectors
- ▶ Overall outer jacket with foot markers

NEW!



DM-CBL-D
DigitalMedia™ D Cable

- ▶ Provides a DM upgrade path for existing installations with CresCAT® and QuickMedia® wiring
- ▶ High-bandwidth, low-crosstalk design
- ▶ Available plenum or non-plenum
- ▶ Easy termination using DM-CONN connectors

NEW!



CRESFIBER
CresFiber™ Fiber Optic Cable, 50/125 x4

- ▶ Multimode fiber optic cable
- ▶ Simple, reliable solution for DM Fiber based systems
- ▶ High-bandwidth laser-optimized OM3 cores
- ▶ Up to 1000 ft cable lengths without repeaters
- ▶ Breakout cable construction
- ▶ Four individually jacketed fiber strands
- ▶ Reinforced outer jacket with foot markers
- ▶ Provides two spare strands for backup or expansion
- ▶ Available plenum or non-plenum
- ▶ Easy termination using CRESFIBER-CONN-SC50UM connectors

NEW!



CRESFIBER-TK

CresFiber™ Termination Kit

- ▶ Fast field termination of CresFiber fiber optic cable
- ▶ Includes everything needed for consistent, high-quality results
- ▶ Includes instructional video

NEW!



CRESFIBER-DUAL-SC

CresFiber™ Duplex Fiber Optic Cable Assembly, 50/125, SC

- ▶ Crestron® certified pre-terminated SC fiber optic cables
- ▶ Dual-strand composite construction
- ▶ For use with DigitalMedia™ systems
- ▶ Available in 1.5, 3, 6, 12, 20, 30, 60, 100, 200, and 300 feet lengths
- ▶ Lengths over 30 feet feature metal and Kevlar armored jacket

HDMI™ Solutions

NEW!



HD-MD8X1 HD-MD8X2

QuickSwitch HD™ HDMI™ Switchers

- ▶ High-performance 8x1 and 8x2 HDMI switchers
- ▶ Low-latency QuickSwitch HD™ switching technology
- ▶ Supports HDMI 1.3a with Deep Color
- ▶ Supports 7.1 channel HD lossless audio
- ▶ DVI and DisplayPort Multimode compatible
- ▶ Resolutions up to 1920x1200 and 1080p60
- ▶ Detects and displays detailed signal information
- ▶ Manages HDCP for connected devices
- ▶ Manages AV signal formats automatically
- ▶ Enables device control via CEC
- ▶ Allows audio breakaway switching
- ▶ Front panel switching controls
- ▶ Native control system integration via Ethernet or Cresnet®
- ▶ Single-space 19" rack-mountable

NEW!



HD-DA-2-QUAD

Quad 1-to-2 HDMI™ Distribution Amplifier

- ▶ Contains (4) 1-to-2 HDMI distribution amps
- ▶ Enables audio "loop-thru" for DVPHD inputs
- ▶ Front panel input sync LEDs
- ▶ HDCP and HDMI 1.3a compliant
- ▶ Single-space rack mount

NEW!



HD-TX1-F HD-RX1-F

HDMI™ over Fiber Transmitter and Receiver

- ▶ Extends uncompressed digital video, audio, and control signals 1000 feet over a single multimode fiber
- ▶ Supports HDMI 1.3a with Deep Color
- ▶ Supports 7.1 channel HD lossless audio
- ▶ Handles resolutions up to 1920x1200 and 1080p60
- ▶ Passes EDID, CEC, and HDCP
- ▶ Universal IR repeater up to 192kHz
- ▶ Bidirectional RS-232 extender up to 115k Baud
- ▶ No programming or configuration needed
- ▶ 12VDC power packs included

NEW!



HD-TX3-F HD-RX3-F

HDMI™ over Fiber Transmitter and Receiver

- ▶ Extends uncompressed digital video, audio, and control signals 1000 feet over a single multimode fiber
- ▶ Extends analog stereo audio signals
- ▶ Supports HDMI 1.3a with Deep Color
- ▶ Supports 7.1 channel HD lossless audio
- ▶ Includes mini-TRS stereo audio connector
- ▶ Handles resolutions up to 1920x1200 and 1080p60
- ▶ Passes EDID, CEC, and HDCP
- ▶ Extends USB HID mouse/keyboard signals
- ▶ Extends 10/100 Ethernet LAN data
- ▶ Universal IR repeater up to 192kHz
- ▶ Bidirectional RS-232 extender up to 115k Baud
- ▶ No programming or configuration needed
- ▶ 12VDC power packs included

NEW!

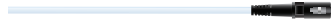


CRESFIBER-SINGLE-SC

CresFiber™ Simplex Fiber Optic Cable Assembly, 50/125, SC

- ▶ Crestron® certified pre-terminated SC fiber optic cables
- ▶ For use with Crestron® HDMI™ over Fiber Transmitters and Receivers
- ▶ Available in 1.5, 3, 6, 12, 20, 30, 60, 100, 200, and 300 feet lengths
- ▶ Lengths over 30 feet feature metal and Kevlar armored jacket

NEW!



CRESFIBER- SINGLE-SC- CLEAR

CresFiber™ Transparent Simplex Fiber Optic Cable Assembly, 50/125, SC

- ▶ Thin, transparent version of CresFiber
- ▶ Virtually invisible — less than 1mm thick
- ▶ Hides in corners or along molding — great for retrofits!
- ▶ Pre-terminated and Crestron® certified

- ▶ For use with Crestron® HDMI™ over Fiber Transmitters and Receivers
- ▶ Also compatible with DigitalMedia™
- ▶ Available in 1.5, 3, 6, 12, 20, 30, 60, 100, 200, and 300 feet lengths

Multiroom Distribution



AES

Adagio® Entertainment System

- ▶ Audio distribution for 6 rooms
- ▶ Expandable up to 24 rooms using AAE
- ▶ Integrated 45W x 12 channel power amplifier
- ▶ Enhanced front panel setup and control

- ▶ Choice of room controllers and remotes
- ▶ Modular multi-channel AM/FM and SIRIUS XM Radio tuners
- ▶ Programmable whole-house automation control



AADS AADS-XM

Adagio® Audio Distribution System

- ▶ Audio distribution for 6 rooms
- ▶ Expandable up to 24 rooms using AAE
- ▶ Integrated 45W x 12 channel power amplifier
- ▶ Front panel setup and control

- ▶ Choice of room controllers and remotes
- ▶ Built-in AM/FM and optional SIRIUS XM Radio tuners
- ▶ Programmable whole-house automation control



AAE

Adagio® Audio Expander

- ▶ 6 room audio distribution
- ▶ 10 stereo line inputs
- ▶ 45 watts x 12 channel power amplifier

- ▶ Expands Adagio systems
- ▶ Works with any Crestron 2-Series control system
- ▶ Built-in Cresnet® distribution



CEN-TRACK Tuner Rack

- ▶ Modular multi-tuner using Adagio tuner cards
- ▶ Up to 6 AM/FM tuners, or up to 3 satellite radio and 3 AM/FM tuners
- ▶ Supports SIRIUS XM Radio
- ▶ Touchpanel display of program guides and metadata

- ▶ Up to 20 channel presets per tuner
- ▶ Balanced, unbalanced, and digital audio outputs
- ▶ Ethernet integration with 2-Series control systems
- ▶ Easy setup from front panel or software
- ▶ 2-space rack-mountable



CNX-PAD8A Audio Distribution Processor

- ▶ High-performance stereo audio switcher and preamp
- ▶ Distributes 8 stereo audio sources to 8 line outputs
- ▶ Combinable for up to 32 rooms
- ▶ Volume, bass, treble, balance, loudness, and mute controls

- ▶ Programmable input gain compensation
- ▶ Selectable mono summing on each output
- ▶ Protective output mute relays
- ▶ Fully configurable in SystemBuilder™ software
- ▶ Cresnet® communications



CNX-BIPAD8 CAT5 Audio Distribution Processor

- ▶ High-performance stereo audio switcher and preamp
- ▶ Distributes 16 stereo audio sources to 8 line outputs
- ▶ RCA and RJ45 CAT5 outputs
- ▶ Combinable for up to 32 rooms
- ▶ Volume, bass, treble, balance, loudness, and mute controls

- ▶ Protective output mute relays
- ▶ 8 additional room return inputs via CAT5
- ▶ Programmable input gain compensation
- ▶ Selectable mono summing on each output
- ▶ Fully configurable in SystemBuilder™ software
- ▶ Cresnet® communications



CNAMPX-12X60
CNAMPX-16X60
Multi-Room Amplifiers

- ▶ Audiophile-grade 12 and 16 channel amplifiers
- ▶ Speaker-level distribution to 6 or 8 rooms
- ▶ 60 watts/ch. @ 8 ohms; 90 watts/ch. @ 4 ohms
- ▶ Separate power supply for every channel
- ▶ Convection-cooled modular component design
- ▶ Up to 8 outputs bridgeable using optional CNXBRMO

- ▶ Power control and temperature monitoring via Cresnet®
- ▶ Independent on/off control per stereo pair, channel fault detection, output level monitoring and short-circuit detection (CNAMPX-16X60)



CNAMPX-2X60
2 Channel Room Amplifier

- ▶ Audiophile-grade 2 channel amplifier
- ▶ High-performance Class AB design
- ▶ Discrete high-current, bipolar output transistors
- ▶ 60 Watts/ch. @ 8 ohms; 90 Watts/ch. @ 4 ohms
- ▶ 200 Watts bridged-mono @ 8 ohms

- ▶ Twin MOH-core toroidal transformers
- ▶ Fanless convection-cooled design
- ▶ Opto-coupled output protection
- ▶ Power control and temperature monitoring via Cresnet®



CNX-PVID8X3
CNX-PVID8X4
CAT5 Video Distribution Switchers

- ▶ CAT5 balanced video distribution to 8 rooms
- ▶ Combinable to support up to 32 rooms
- ▶ Variable input configurations:
 - ▶ 16 inputs - any type: YPbPr, S-video, or composite
 - ▶ 24 inputs - 8 composite, 8 S-video/composite, & 8 YPbPr/S-video/composite
 - ▶ 32 inputs - 16 composite & 16 S-video/composite

- ▶ 16 coaxial digital audio inputs (CNX-PVID8X4 only)
- ▶ Supports 1080i HDTV up to 500 feet over CAT5e
- ▶ Built-in video signal sensing on every input
- ▶ RCA outputs for conventional matrix switching
- ▶ Fully configurable in SystemBuilder™ software
- ▶ Controllable via Cresnet® communications



CNXRMC
CNXRMCLV
CAT5 Room Solution Boxes

- ▶ CAT5 AV receiver and control interfaces
- ▶ Composite, S-video, and HDTV/component
- ▶ Local AV source routing and control
- ▶ Integrated stereo preamp
- ▶ Built-in video signal sensing

- ▶ Single-cable hookup using CresCAT® wire
- ▶ Supports 1080i HDTV up to 500 feet
- ▶ Adjustable video compensation
- ▶ Controllable via Cresnet® communications

Wideband Switchers



CEN-RGBHV8X4
CEN-RGBHV8X8
CEN-RGBHV12X4
CEN-RGBHV12X8
CEN-RGBHV16X16
Wideband RGB Matrix Switchers

- ▶ High-bandwidth matrix switchers
- ▶ 5 different sizes available
- ▶ Low crosstalk & incredibly flat response
- ▶ 450MHz video bandwidth (-3dB)
- ▶ Professional balanced stereo audio
- ▶ Audio input level compensation
- ▶ Audio output volume and mute control

- ▶ Input sync detection
- ▶ Genlock sync input
- ▶ Adjustable video and audio blanking
- ▶ Selectable input sync impedance
- ▶ Stand-alone operation & LCD front panel
- ▶ Cresnet® and Ethernet communications
- ▶ Rack mount installation

Wideband Switchers

NEW!



CEN-RGBHV32X32V
32x32 Wideband RGB
Matrix Switcher

- ▶ High-bandwidth 32x32 matrix switcher
- ▶ Low crosstalk & incredibly flat response
- ▶ 450MHz video bandwidth (-3dB)
- ▶ Input sync detection
- ▶ Genlock sync input
- ▶ Adjustable video blanking
- ▶ Selectable input sync impedance
- ▶ Stand-alone operation & LCD front panel
- ▶ Cresnet® and Ethernet communications
- ▶ 9-space rack mount installation

NEW!



CEN-RGBHV32X32A
32x32 Audio Matrix
Switcher

- ▶ 32x32 stereo audio matrix switcher
- ▶ Professional balanced inputs and outputs
- ▶ Input level compensation
- ▶ Output volume and mute control
- ▶ Adjustable audio blanking
- ▶ Controllable via the CEN-RGBHV32X32V or a control system
- ▶ Cresnet® or Ethernet communications
- ▶ 3-space rack mount installation

Creston® Certified Interface Cables

NEW!



CBL Series
Creston® Interface Cables

- ▶ Professional quality cables from Creston
- ▶ Creston guaranteed end-to-end system performance
- ▶ Wide selection of digital and analog AV cables
- ▶ High-speed Category 2 HDMI™ cables
- ▶ HDMI adapter cables for DVI and DisplayPort Multimode
- ▶ 25k gold plated connectors
- ▶ High-flex CL3-rated jacket for in-wall installation
- ▶ RoHS compliant
- ▶ Available in several popular lengths

Available models:

- ▶ **CBL-HD** High-Speed HDMI
- ▶ **CBL-DVI** Dual-Link DVI
- ▶ **CBL-HD-DVI** HDMI-to-DVI
- ▶ **CBL-DP-HD** DisplayPort-to-HDMI
- ▶ **CBL-SPDIF** RCA Coaxial Digital Audio
- ▶ **CBL-OPTICAL** Optical Digital Audio
- ▶ **CBL-XLR** XLR Balanced Audio
- ▶ **CBL-RCA2** RCA Stereo Audio
- ▶ **CBL-RCA3** RCA Component Video
- ▶ **CBL-RCA** RCA Composite Video
- ▶ **CBL-VGA** High-Bandwidth VGA
- ▶ **CBL-VGA-AUD** VGA w/audio
- ▶ **CBL-MINI** Mini-TRS Stereo Audio

Control Systems



**PRO2
AV2**
Professional Dual Bus
Control Systems

- ▶ 2-Series engine | Dual-bus architecture
- ▶ 4GB Compact Flash memory card slot
- ▶ Cresnet® port – master/slave selectable
- ▶ 10/100 Ethernet capable | SSL encryption
- ▶ e-Control®2 and RoomView™ enabled
- ▶ SNMP support | Built-in firewall, NAT and router
- ▶ 6 COM, 8 IR/serial, 8 Versiport I/O & 8 relay ports
- ▶ 3 Y-Bus / 1 Z-Bus control card expansion slots
- ▶ Internal power supply | 2-space rack-mountable
- ▶ Front control panel with LCD display (PRO2 only)



RACK2
Dual Bus Control System
w/Solutions Card Frame

- ▶ 2-Series engine | Dual-bus architecture
- ▶ 4GB Compact Flash memory card slot
- ▶ Cresnet® port – master/slave selectable
- ▶ Integrated Cresnet® network hub
- ▶ 10/100 Ethernet capable | SSL encryption
- ▶ e-Control®2 enabled | SNMP support
- ▶ Built-in firewall, NAT and router
- ▶ 12 Y-Bus control card expansion slots
- ▶ 4 Z-Bus control card expansion slots
- ▶ 4-space rack-mountable
- ▶ Front control panel with LCD display



CP2E

Compact Control System

- ▶ 2-Series engine
- ▶ Dual-bus architecture
- ▶ Cresnet® port – master/slave selectable
- ▶ 10/100 Ethernet | SSL encryption

- ▶ e-Control®2 enabled
- ▶ SNMP support
- ▶ 3 COM, 8 IR/serial, 8 Versiport I/O, & 8 relay ports
- ▶ Single-space rack-mountable



MC2W

Integrated Wireless Control System

- ▶ 2-Series engine
- ▶ Built-in 1-way RF wireless gateway
- ▶ IR wireless compatible using CNXRMIRD

- ▶ Cresnet port - master/slave selectable
- ▶ 2 COM, 4 IR/serial, 4 Versiport I/O, & 4 relay ports
- ▶ Single-space EIA rack-mountable



QM-RMC

Room Media Controller

- ▶ Compact 2-Series control processor/ expansion module
- ▶ 10/100 Ethernet | SSL encryption

- ▶ e-Control®2 enabled
- ▶ SNMP support
- ▶ 2 RS-232, 1 IR/serial, 4 digital input ports



PAC2

Professional Automation Control System

- ▶ 2-Series engine | Dual-bus architecture
- ▶ 4GB Compact Flash memory card slot
- ▶ Built-in Cresnet® distribution and hub/repeater
- ▶ 10/100 Ethernet capable | SSL encryption
- ▶ e-Control®2 and RoomView™ enabled
- ▶ SNMP support | Built-in firewall, NAT and router

- ▶ 8 Versiport I/O ports & 8 relay ports built-in
- ▶ 2 Y-Bus/1 Z-Bus control card expansion slots
- ▶ Internal power supply | CAEN enclosure installation
- ▶ Configurable via Crestron D3 Pro™ software



PAC2M

Professional Automation Mini Control System

- ▶ 2-Series control engine
- ▶ MMC memory expansion card slot
- ▶ Built-in Cresnet® distribution and hub/repeater
- ▶ 10/100 Ethernet capable | SSL encryption
- ▶ e-Control®2, SNMP, & RoomView™ support
- ▶ 4 relay and 4 digital input control ports

- ▶ Occupies a single module space in any CAEN enclosure
- ▶ Surface-mountable without an enclosure
- ▶ Configurable via Crestron D3 Pro™ software
- ▶ Requires external power supply

NEW!



IPAC

Integrated Professional Automation Computer

- ▶ Wall mount 2-Series control processor
- ▶ Programmable LCD front panel
- ▶ 7 programmable buttons with LED feedback
- ▶ Customizable backlit button labels
- ▶ Astronomical time clock
- ▶ Cresnet master port

- ▶ 10/100 Ethernet | SSL encryption
- ▶ e-Control®2 enabled | SNMP support
- ▶ 2 RS-232, 4 digital/analog input, & 4 relay control ports
- ▶ 3-gang wall-mountable
- ▶ Available in white or black

NEW!



MPC-M5

MPC Media Presentation Controller™ M5

- ▶ Low-cost wall mount 2-Series control processor
- ▶ 10 programmable buttons with LED feedback
- ▶ Customizable backlit button labels
- ▶ Built-in IR receiver
- ▶ 10/100 Ethernet | SSL encryption
- ▶ PoE network powered

- ▶ e-Control®2 enabled
- ▶ SNMP support
- ▶ RS-232, IR, 2 input, & 2 relay control ports
- ▶ 2-gang wall-mountable
- ▶ Available in white or black
- ▶ Four other MPC models available

Power Conditioner



CEN-UPS1250
Uninterruptible Power Supply

- ▶ UPS and power conditioning – Engineered by APC®
- ▶ 2-Series control system integration
- ▶ Centralized management via RoomView software
- ▶ Battery backup and power control management
- ▶ Surge protection for power line, coax and telco
- ▶ Isolated EMI and RFI noise filtering
- ▶ Automatic voltage regulation
- ▶ Built-in environmental monitoring
- ▶ Onboard data and event logging
- ▶ 19" 4-post EIA rack-mountable

Keypads



APAD
Wall Mount LCD Controller

- ▶ Stylish wall mount controller
- ▶ LCD graphic display
- ▶ Scrolling list object
- ▶ 4 "softkeys", enter, and power buttons
- ▶ Nav wheel with "key click" sound
- ▶ Adagio® plug-and-play functionality
- ▶ Cresnet® communications
- ▶ Gloss white or black finishes



C2N-CBF-T
Cameo® Keypads
Flush Mount

- ▶ Stylish and versatile wall mount keypads
- ▶ Low-profile flush mount appearance
- ▶ Versatile combinations of 2 to 6 pushbuttons
- ▶ Installer-configurable using 3 button sizes
- ▶ Programmable for up to 3 functions per button
- ▶ Customizable backlit button engraving
- ▶ White LED lightpipe feedback indicators
- ▶ Built-in LED blinking and bargraph logic
- ▶ Auto-dim backlight and LED intensity
- ▶ 2 contact closure inputs
- ▶ Ambient light sensor
- ▶ Available in five designer colors
- ▶ Cresnet® communications



**C2N-CBD-TS
INET-CBD**
Cameo® Keypads
Standard Mount

- ▶ Stylish and versatile wall mount keypads
- ▶ Standard electrical box installation
- ▶ Color-matched "smooth" and "textured" finishes
- ▶ Versatile combinations of 2 to 6 pushbuttons
- ▶ Installer-configurable using 3 button sizes
- ▶ Programmable for up to 3 functions per button
- ▶ Customizable backlit button engraving
- ▶ White LED lightpipe feedback indicators
- ▶ Built-in LED blinking and bargraph logic
- ▶ Auto-dim backlight and LED intensity
- ▶ 2 contact closure inputs (C2N-CBD-TS only)
- ▶ Ambient light sensor
- ▶ Available in twelve designer colors/finishes
- ▶ Cresnet® or infiNET communications



**C2NI-CB
INETI-CB**
Cameo® Keypads
International Versions

- ▶ Stylish and versatile wall mount keypads
- ▶ UK/European style electrical box installation
- ▶ Versatile combinations of 4 to 12 pushbuttons
- ▶ Installer-configurable using 3 button sizes
- ▶ Programmable for up to 3 functions per button
- ▶ Customizable backlit button engraving
- ▶ White LED lightpipe feedback indicators
- ▶ Built-in LED blinking and bargraph logic
- ▶ Auto-dim backlight and LED intensity
- ▶ 2 contact closure inputs (C2NI-CB only)
- ▶ Ambient light sensor
- ▶ Available in textured almond, black or white
- ▶ Architectural Series faceplate options
- ▶ Cresnet or infiNET communications



HTT-B10X
infiNET™ TableTop
Controller

- ▶ Stylish wireless pushbutton controller
- ▶ 10 engravable backlit buttons
- ▶ Configurable for up to 3 functions per button
- ▶ White LED lightpipe feedback indicators
- ▶ True-feedback and dual-bargraph capability
- ▶ infiNET 2-way RF wireless communications
- ▶ Powered by batteries or external power pack
- ▶ Wakes instantly when touched or picked up
- ▶ Auto-dim backlight and LED intensity
- ▶ Available in black or white



C2N-DB
Decorator Series Keypads

- ▶ Fit standard electrical gang boxes and decorator style faceplates
- ▶ Available with 6, 8, and 12 engravable buttons
- ▶ Programmable feedback LEDs
- ▶ Available in black, white, and almond
- ▶ Cresnet communications



CNX-B

Designer Series Keypads

- ▶ Stylish appearance with large-sized buttons
- ▶ Elegant designer and architectural faceplates
- ▶ Choice of 2, 4, 6, 8, or 12 engravable buttons
- ▶ Gang up to 3 keypads side-by-side
- ▶ Programmable feedback LEDs

- ▶ Backlit engraving option
- ▶ WAV file audible feedback
- ▶ Built-in temperature sensor
- ▶ Available in black, white, and almond
- ▶ Cnesnet® communications

infiNET EX™ Lighting

NEW!



CLW-DIMEX-E

Decorative Wall Mount Dimmer

- ▶ Screw terminal connection
- ▶ Supports up to 600W loads
- ▶ Installs in a 1-gang back box

- ▶ Based on industry standard ZigBee® PRO Stack
- ▶ Available in 3 designer colors
- ▶ UL listed

NEW!



CLW-SWEX-E

Decorative Wall Mount Switch

- ▶ Screw terminal connection
- ▶ Supports up to 600W loads
- ▶ Installs in a 1-gang back box
- ▶ Based on industry standard ZigBee® PRO Stack

- ▶ Configurable buttons
- ▶ Available in 3 designer colors
- ▶ UL listed

NEW!



CLW-DIMSWEX-E

Decorative Wall Mount Dimmer/Switch

- ▶ Screw terminal connection
- ▶ Supports up to 600W loads on dimmer
- ▶ Installs in a 1-gang back box
- ▶ Based on industry standard ZigBee® PRO Stack

- ▶ Configurable buttons
- ▶ Available in 3 designer colors
- ▶ UL listed

NEW!



CLW-DIMEX-P

Decorative Wall Mount Dimmer

- ▶ Screw terminal connection (flying lead earth)
- ▶ Supports up to 1000W loads
- ▶ Multi-way control via slave units
- ▶ Installs in a 1-gang back box

- ▶ Based on industry standard ZigBee® PRO Stack
- ▶ Configurable buttons
- ▶ Available in 12 designer colors
- ▶ UL listed

NEW!



CLW-SWEX-P

Decorative Wall Mount Switch

- ▶ Screw terminal connection (flying lead earth)
- ▶ Supports up to 600W loads
- ▶ Multi-way control via slave units
- ▶ Installs in a 1-gang back box

- ▶ Based on industry standard ZigBee® PRO Stack
- ▶ Configurable buttons
- ▶ Available in 12 designer colors
- ▶ UL listed

NEW!



CLW-DIMSWEX-P

Decorative Wall Mount Dimmer/Switch

- ▶ Screw terminal connection
- ▶ Supports up to 600W loads on dimmer
- ▶ Installs in a 1-gang back box

- ▶ Based on industry standard ZigBee® PRO Stack
- ▶ Available in 12 designer colors
- ▶ UL listed

NEW!



CLW-SLV-P

Slave Unit to PRO Line Dimmers and Switches

- ▶ Connect up to 10 per switch or dimmer
- ▶ Provides multi-way control of lighting
- ▶ Installs in a 1-gang back box
- ▶ Based on industry standard ZigBee® PRO Stack

- ▶ Configurable buttons
- ▶ Available in 12 designer colors
- ▶ UL listed

NEW!



CLW-DIMEX-CN-P
Decorative Wall Mount
Cresnet® Dimmer

- ▶ Screw terminal connection (flying lead earth)
- ▶ Supports up to 1000W loads
- ▶ Multi-way control via slave units
- ▶ Installs in a 1-gang back box

- ▶ Configurable buttons
- ▶ Available in 12 designer colors
- ▶ UL listed

NEW!



CLW-SWEX-CN-P
Decorative Wall Mount
Cresnet® Switch

- ▶ Screw terminal connection (flying lead earth)
- ▶ Supports up to 600W loads
- ▶ Multi-way control via slave units
- ▶ Installs in a 1-gang back box

- ▶ Available in 12 designer colors
- ▶ Configurable buttons
- ▶ UL listed

NEW!

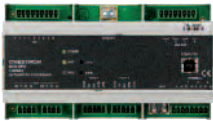


CLW-DIMSWEX-CN-P
Decorative Wall Mount
Cresnet® Dimmer/Switch

- ▶ Screw terminal connection
- ▶ Supports up to 600W loads on dimmer
- ▶ Installs in a 1-gang back box

- ▶ Configurable buttons
- ▶ Available in 12 designer colors
- ▶ UL listed

DIN Rail Lighting



DIN-AP2
DIN Rail 2-Series Automation
Processor

- ▶ 2-Series control engine
- ▶ MMC memory expansion card slot
- ▶ Cresnet port – master/slave selectable
- ▶ 10/100 Ethernet | SSL encryption
- ▶ e-Control®2, SNMP, & RoomView® support

- ▶ 2 bidirectional RS-232 COM ports | 4 IR/serial ports
- ▶ 8 Versiport I/O ports | 4 Low-voltage relay ports
- ▶ Configurable via Crestron D3 Pro software
- ▶ 9M wide DIN rail mounting
- ▶ Requires external power supply



DIN-1DIMU4
DIN Rail Universal Dimmer

- ▶ 4 channels of forward or reverse phase dimming
- ▶ Auto load detection
- ▶ 120 to 240 Volt 50/60 Hz operation
- ▶ Selectable non-dim mode
- ▶ Phase-Synchronous Detection Circuitry
- ▶ Short circuit and overload protection

- ▶ Cresnet communications
- ▶ Master air-gap relay | Override input
- ▶ Setup via front panel or software
- ▶ Programmable functionality via DIN-AP2
- ▶ 12M wide DIN rail mounting



DIN-4DIMFLV4
DIN Rail 0-10V Fluorescent
Dimmer

- ▶ 2-Series control engine
- ▶ 4 channels of 4-wire 0-10 Volt fluorescent dimming
- ▶ Supports 120 to 240 Volt 50/60 Hz
- ▶ Also allows switching of lighting and exhaust fans

- ▶ Setup via front panel or software
- ▶ Override input | Cresnet communications
- ▶ Programmable functionality via DIN-AP2
- ▶ 9M wide DIN rail mounting



DIN-8SW8
DIN Rail High-Voltage Switch

- ▶ 8 channels of power switching
- ▶ Supports 120 to 240 Volt 50/60 Hz
- ▶ Override input
- ▶ Cresnet communications

- ▶ Setup via front panel or software
- ▶ Programmable functionality via DIN-AP2
- ▶ 9M wide DIN rail mounting



DIN-2MC2
DIN Rail Motor Control

- ▶ Dual-channel bidirectional motor control
- ▶ Supports 120 to 240 Volt 50/60 Hz
- ▶ Override input
- ▶ Cresnet communications

- ▶ Setup via front panel or software
- ▶ Programmable functionality via DIN-AP2
- ▶ 6M wide DIN rail mounting



DIN-A08

DIN Rail Analog Output Module

- ▶ Eight 0-10V analog output control ports
- ▶ Interface for 3rd-party lighting and heating/cooling
- ▶ Fully programmable functionality via DIN-AP2
- ▶ Setup via front panel or software

- ▶ Override input
- ▶ Cresnet communications
- ▶ 6M wide DIN rail mounting



DIN-I08

DIN Rail Versiport Module

- ▶ 8 Versiport I/O ports
- ▶ Interface for 3rd-party sensors, detectors, contact closures, and alarms

- ▶ Fully programmable functionality via DIN-AP2
- ▶ Cresnet communications
- ▶ 6M wide DIN rail mounting



DIN-PWS50

DIN Rail 50 Watt Cresnet Power Supply

- ▶ 50 Watt Cresnet power supply module
- ▶ Powers the DIN-AP2 Automation Processor and other Cresnet devices
- ▶ Includes 3 Cresnet power ports

- ▶ Cresnet data passes through unaffected
- ▶ Dual line power input terminals for easy daisy-chaining
- ▶ 6M wide DIN rail mounting



DIN-BLOCK

DIN Rail Cresnet Distribution Block

- ▶ 12 port Cresnet distribution block
- ▶ Detachable screw terminal blocks for easy termination and troubleshooting
- ▶ Split power bus for flexible 24V power distribution

- ▶ Diagnostic LEDs for network power and data
- ▶ Passive device — no programming required
- ▶ 6M wide DIN rail mounting



DIN-HUB

DIN Rail Analog Output Module

- ▶ 3-segment Cresnet hub
- ▶ For Cresnet networks with more than 20 devices
- ▶ Configurable power distribution

- ▶ No programming required
- ▶ 6M wide DIN rail mounting

iLux™ Integrated Lighting System



CLS-C6

CLS-C6M

iLux™ Integrated Lighting Systems

- ▶ Wall-mounted integrated lighting and shade control
- ▶ 6 Channels of dimming or switching
- ▶ 6 Groups of shade and drape control
- ▶ Linkable for up to 54 lighting channels and 54 shade groups
- ▶ Up to 16 user-settable scenes | 7 Configurable “rocker” buttons
- ▶ Customizable label strip | ON and OFF buttons
- ▶ 6 Bargraphs show lighting levels and shade positions

- ▶ Flip-up front cover reveals setup controls
- ▶ Easy setup from front panel or iLux Designer software
- ▶ Multipoint control using up to 16 keypads
- ▶ Optional IR remote | Master air-gap relay
- ▶ Integrates with 2-Series control systems via Cresnet
- ▶ Available in almond, black, or white
- ▶ Built-in motion detector (CLS-C6M only)



CLS-C6RF

CLS-C6MRF

iLux™ Integrated Lighting System w/infiNET™

- ▶ All the features of the CLS-C6 or CLS-C6M
- ▶ Communicates with control system via infiNET wireless network

iLux™ Integrated Lighting System



CLS-EXP-DIM
iLux™ Dimmer Expansion Module

- ▶ Works with iLux, CLW, and CLX Series dimmers
- ▶ Supports 120, 230, and 277 Volt incandescent, NCC, MLV, and 2-wire dimmable fluorescent loads
- ▶ Minimum fluorescent dimming level adjustment
- ▶ Built-in air gap relay at the output
- ▶ Surface mount design



CLS-EXP-DIMU
iLux™ Universal Dimmer Expansion Module

- ▶ Works with iLux, CLW, and CLX Series dimmers
- ▶ Supports 120, 230, and 277 Volt ELV, MLV, NCC, incandescent, and 2-wire dimmable fluorescent loads
- ▶ Auto-selects for forward or reverse phase ballasts
- ▶ Minimum fluorescent dimming level adjustment
- ▶ Built-in air gap relay at the output
- ▶ Surface mount design



CLS-EXP-DIMFDB
iLux™ 3-Wire Fluorescent Dimmer Expansion Module

- ▶ Works with iLux, CLW, and CLX Series dimmers
- ▶ Supports 120, 230, and 277 Volt ELV, MLV, NCC, incandescent, and 2-wire dimmable fluorescent loads
- ▶ Auto-selects for forward or reverse phase ballasts
- ▶ Minimum fluorescent dimming level adjustment
- ▶ Built-in air gap relay at the output
- ▶ Surface mount design



CLS-EXP-DIMFLV
iLux™ 0-10V Fluorescent Dimmer Expansion Module

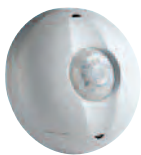
- ▶ Works with iLux, CLW, and CLX Series dimmers
- ▶ Supports 120, 230, and 277 Volt 4-wire 0-10 Volt fluorescent dimming
- ▶ Supports switching of non-dimmable lighting loads and 1/2 HP motors
- ▶ Built-in air gap relay at the output
- ▶ Surface mount design

Sensors



GLS-ODT Series
Dual-Technology Occupancy Sensors

- ▶ Ceiling and wall mount models
- ▶ Up to 2000 square feet coverage
- ▶ Discreet, low-profile appearance
- ▶ Extremely accurate and reliable sensing
- ▶ Microprocessor-controlled self-adapting operation
- ▶ Fully-digital circuitry for low cost and high reliability
- ▶ Built-in ambient light recognition
- ▶ Control system interface via Cresnet or digital input



GLS-OIR Series
Passive Infrared Occupancy Sensors

- ▶ Ceiling and wall mount models
- ▶ Up to 2500 square feet coverage
- ▶ Discreet, low-profile appearance
- ▶ Accurate and reliable sensing
- ▶ Microprocessor-controlled self-adapting operation
- ▶ Fully-digital circuitry for low cost and high reliability
- ▶ Built-in ambient light recognition
- ▶ Control system interface via Cresnet or digital input



**GLS-LOL
GLS-LCL**
Photocell Light Sensors

- ▶ Designed for open or closed-loop daylight harvesting applications
- ▶ Versatile flush or surface mounting
- ▶ 0-10V analog control output
- ▶ Control system interface via Cresnet or analog input

Visit the Crestron HD Experience in Sound Room 1 (SR-1)

Location: Sound Room 1 (Hall C)

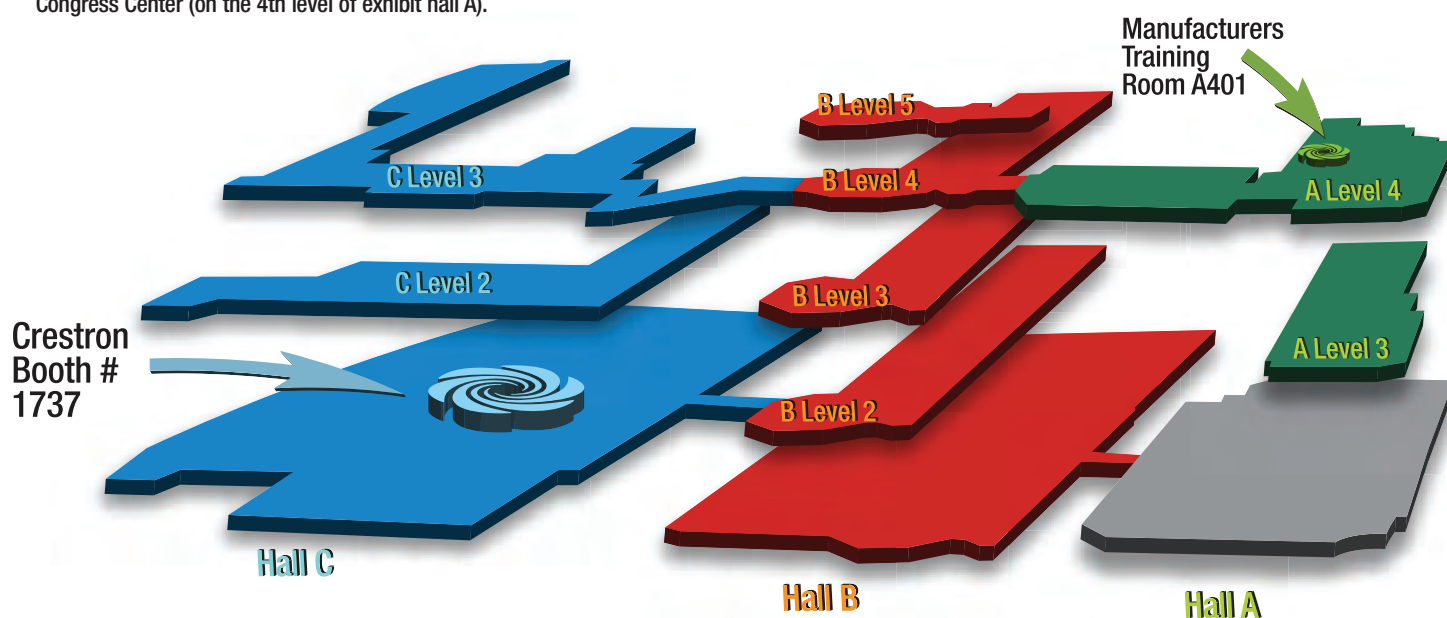
Crestron has totally transformed Sound Room One (SR-1) into the ultimate **Digital Home Theater Experience**. Relax in our stadium-style, acoustically designed theater and get ready to see, hear and feel mind blowing HD surround sound and true digital media in an amazing live setting. More importantly, you'll learn about the latest innovations in the new world of digital home theater technology, the valuable role it will play in home entertainment applications of the future, and how you can implement them for your clients today.



Showcasing the new ADMS Intermedia™ Delivery System and the new PROCISE™ HD Surround Sound Processor (PSPHD), Crestron welcomes guests to enjoy the ultimate home theater experience.

Crestron's Manufacturer Product Training classes are some the most valuable and popular courses taught at CEDIA.

All Classes will be held in Room A401 in the Georgia World Congress Center (on the 4th level of exhibit hall A).



Crestron World Headquarters

15 Volvo Drive
Rockleigh, NJ 07647
800.237.2041
201.767.3400
Fax: 201.767.1903
crestron.com

Crestron International Headquarters

Oude Keerbergsebaan 2
2820
Rijmenam
Belgium
+32.15.50.99.50
Fax: +32.15.50.99.40
crestron-int.be

Crestron Asia Headquarters

Room 2501, 25/F, Westin Centre
No. 26 Hung To Road
Kwun Tong
Hong Kong
+852.2341.2016
Video Ph: +852.2373.7530
Fax: +852.2344.0889
crestronasia.com

